

Hakki Pilke

XL Conveyor

Firewood conveyor

- Instructions for assembly, operation and maintenance
- EC Declaration of Conformity
- Safety instructions
- Guarantee terms



The operator must read and understand these instructions before operating the machine!

TP Silva Oy

Valimotie 1, FI-85800 Haapajärvi, Finland

Tel. +358 (0)8 772 7300

info@hakkipilke.fi

www.hakkipilke.fi

Table of contents

1. General information	3
1.1. Introduction	3
1.2. Conveyor's purpose of use	3
1.3. Machine models and basic information	3
1.4. Operating conditions	3
1.5. Safety instructions	4
1.6. Warning symbols	4
2. Receipt and assembly.....	5
2.1. Delivery inspection	5
2.2. Assembling the conveyor.....	6
2.3. Connecting the conveyor to a firewood processor	21
2.4. Using the out-feed conveyor	23
2.5. Adjusting the conveyor belt.....	24
2.6. Turning the conveyor.....	25
2.7. Transporting the conveyor	28
2.8. Adjusting the debris removal sieve	30
2.9. After use	30
2.10. Machine maintenance	31
2.11. Lubrication	31
2.12. Washing and cleaning	33
2.13. Storage	33
3. Guarantee terms	34
7. Declaration of incorporation for partly completed machinery	35

1. General information

1.1.Introduction

The purpose of this manual is to ensure that the conveyor is used in the manner intended by the manufacturer, taking safety into consideration. Everyone operating the machine or working in close proximity to it must study this manual carefully.

Operators of the conveyor are expected to have the basic skills required to use the firewood processor. Before commencing work, operators must also familiarise themselves with the conveyor's control and safety equipment, and ensure their proper operation.

More information on Hakki Pilke products can be found on our website at www.hakkipilke.fi.

Keep this manual in the immediate vicinity of the machine.

1.2.Conveyor's purpose of use

The Hakki Pilke XL Conveyor is intended for transporting firewood from the Hakki Pilke firewood processor to where the firewood is intended to be deposited – sacks, for example. The conveyor must be attached to the Hakki Pilke firewood processor during operation.

1.3.Machine models and basic information

Conveyor model	XL Conveyor 1	XL Conveyor 2	XL Conveyor 3
Weight	560 kg	678 kg	845 kg
Length	4 metres	6 metres	8 metres
Belt width	60 cm	60 cm	60 cm
Required hydraulic oil output	15–20 l/minute	15–20 l/minute	15–20 l/minute
Required hydraulic oil pressure	130–200 bar	130–200 bar	130–200 bar

The machine's serial number, manufacturing date, weight and model are indicated on the machine's grey type plate, which is located on the machine frame next to the winch.

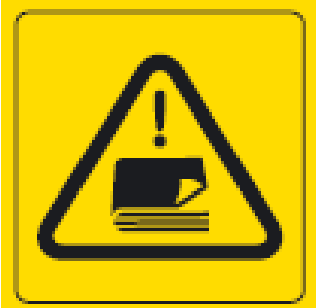





1.4.Operating conditions

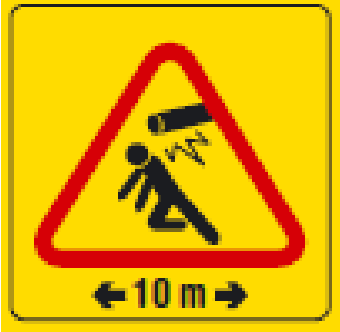





- The temperature range within which the machine can be operated is -20 to +30 °C. In the winter, the operator must ensure that there is no risk of slipping in the working area.
- The working area must be level and clear of unnecessary items. No unauthorised persons may enter the working area. The machine may only be used in sufficient lighting conditions.

1.5. Safety instructions

- This machine is intended to be operated by only one operator. The danger zone is 10 m from the machine.
- Persons under 18 years of age may not operate the conveyor.
- The operator must ensure that the use of the device does not cause danger to others and that there are no unauthorised persons in the danger zone.
- The conveyor may not be operated while under the influence of alcohol or other drugs, or when tired.
- The conveyor may not be operated unless the operator has familiarised themselves with this instruction manual.
- The conveyor is intended for transporting processed firewood only.
- The conveyor must not be towed on the road. When towing in yard areas, the maximum speed is 10 km/h.
- The operator may not modify the structure or functionalities of the conveyor.
- The operator must wear ear protectors, sufficiently tight-fitting work clothing and gloves, protective goggles and safety footwear.
- The conveyor must always be connected to the firewood processor during operation.
- Before starting up the conveyor, the operator must ensure that all the control and safety devices are functional.
- When cleaning the conveyor or carrying out any maintenance, it must be disconnected from its power source.
- Keep the machine's warning labels visible and in good condition. Ensure that the machine features the labels listed in Section 1.7. If necessary, obtain replacements from your retailer.

1.6. Warning symbols

		
<p><i>Read the machine's operating manual before use.</i></p>	<p><i>Wear eye and ear protection.</i></p>	<p><i>Wear safety footwear and work gloves.</i></p>
		
<p><i>Do not wear any loose items of clothing.</i></p>	<p><i>Beware of moving parts.</i></p>	<p><i>Only one person may operate the device.</i></p>

 <p>The danger zone around the device is 10 metres.</p>	 <p>Risk of crushing</p>	 <p>The maximum permitted angle of the conveyor is 40°. Do not walk under the conveyor.</p>
 <p>Hydraulic oil</p>	 <p>Danger zone</p>	 <p>Lubrication point</p>

2. Receipt and assembly

2.1. Delivery inspection

Dispose of the machine's packaging material in an environmentally friendly manner.

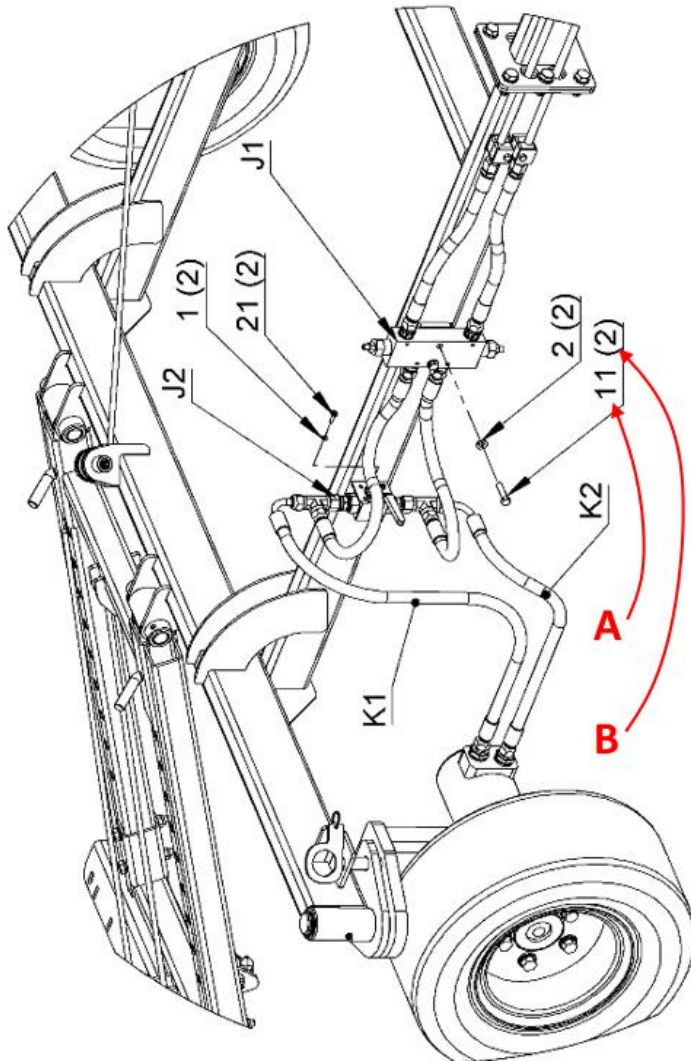
Check that the conveyor has not sustained any damage during transit, and ensure that all necessary parts are included in the package. In the event of any defects or damage, contact the retailer immediately.

Remove any cable ties and strap supports installed for transport.

2.2.Assembling the conveyor

1. Assemble the conveyor base as shown in Section 1 on page 9.

Instructions: In the drawing below, number A indicates the part number in the parts table of page 8, and number B indicates the quantity, i.e. how many of the parts in question must be installed in the position.



2. Assemble the conveyor

- 4 m conveyor: as shown in Section 2.1
- 6 m conveyor: as shown in Section 2.2
- 8 m conveyor: as shown in Section 2.3

3. Install the conveyor belt and connect the hoses as shown in Section 3.

4. Lift the conveyor on the base, and connect the bottom section to the base with rods. Lock the rods with pins, as shown in Section 4.

5. Install debris removal, as shown in Section 5.

- **4 m conveyor: as shown in Section 5.1**
- **6 m and 8 m conveyor: as shown in Section 5.2**

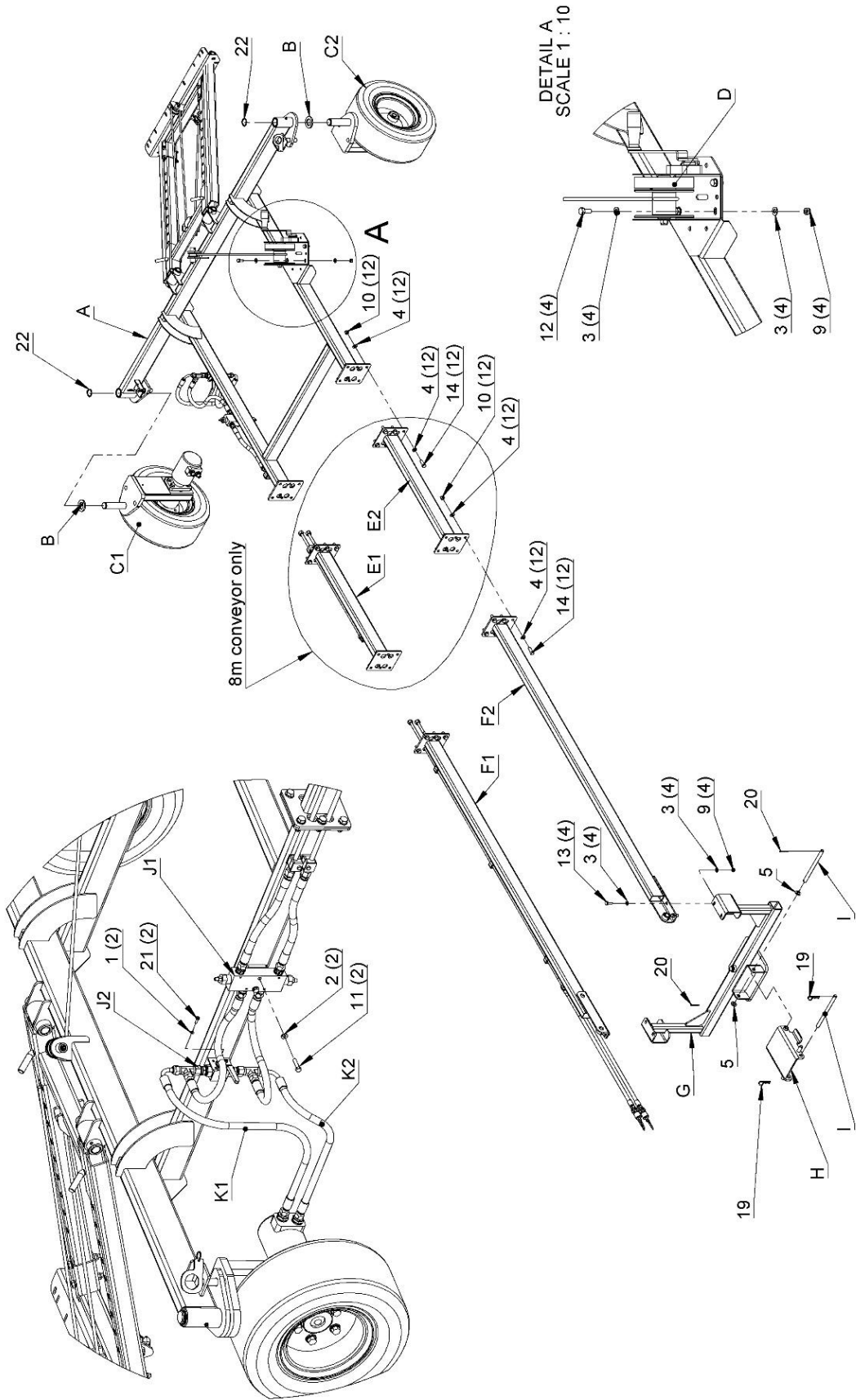
6. Connect the conveyor to the base lifting device

- **4 m conveyor: as shown in Section 6.1**
- **6 m conveyor: as shown in Section 6.2**
- **8 m conveyor: as shown in Section 6.3**

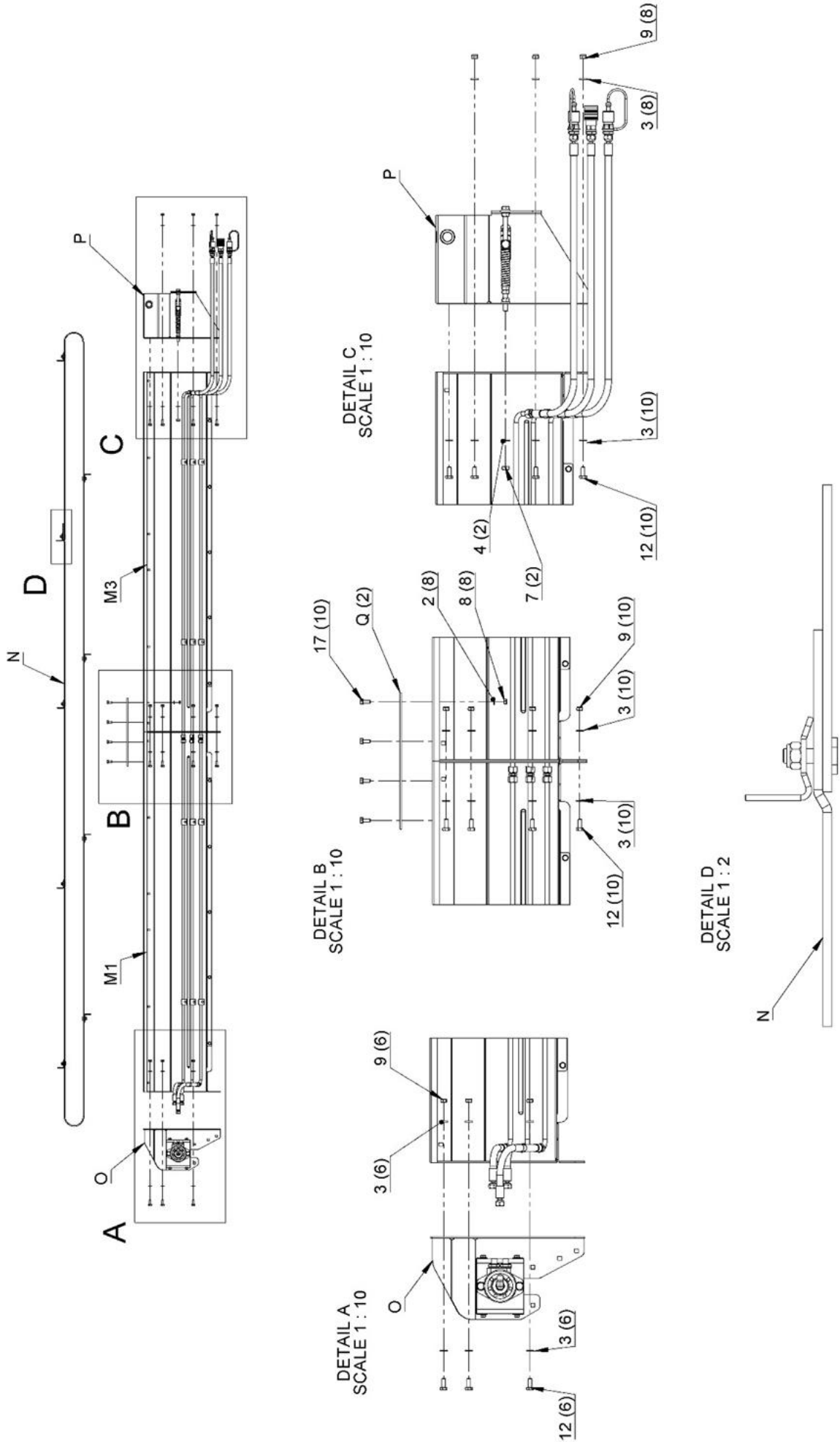
7. Install the firewood guide plates as shown in Section 7.

Code	Name in Finnish	Name in English	8 / 35		Pcs/6 m conv.	Pcs/8 m conv.
			Dimensions	Pcs/4 m conv.		
1	Aluslaatta	Washer	A5	2	2	2
2	Aluslaatta	Washer	A8	8	24	36
3	Aluslaatta	Washer	A10	78	88	134
4	Aluslaatta	Washer	A12	28	28	52
5	Aluslaatta	Washer	A16	2	2	2
6	Kuusiomutteri	Hex nut	M10	2	2	2
7	Kuusiomutteri	Hex nut	M12	2	2	2
8	Lukitusmutteri	Lock nut	M8	18	26	34
9	Lukitusmutteri	Lock nut	M10	42	52	72
10	Lukitusmutteri	Lock nut	M12	12	12	24
11	Kuusioruuvi	Hex screw	M8x35	2	2	2
12	Kuusioruuvi	Hex screw	M10x25	30	40	46
13	Kuusioruuvi	Hex screw	M10x30	10	10	22
14	Kuusioruuvi	Hex screw	M12x35	12	12	24
15	Lukkoruuvi	Locking screw	M8x20	10	10	10
16	Lukkoruuvi	Locking screw	M10x25	4	4	4
17	Laippapultti	Flange bolt	M8x20	8	16	24
18	Jousisokka	Spring pin	8x40	2	2	2
19	Neulasokka	Hitch pin	4	2	2	2
20	Saksisokka	Split pin	4x40	2	2	2
21	Uraruuvi	Slot head screw	M5x16 -Z	2	2	2
22	Pidätinrengas	Retaining ring	35	2	2	2
A	Alustan runko	Base frame		1	1	1
B	Välilevy	Spacer	PL6 d36-D60	2	2	2
C1	Vetorengas	Drive wheel		1	1	1
C2	Rengas	Wheel		1	1	1
D	Vinssi	Winch		1	1	1
E1	Jatkopalkki vasen	Extension bar left		0	0	1
E2	Jatkopalkki oikea	Extension bar right		0	0	1
F1	Sivupalkki vasen	Side bar left		1	1	1
F2	Sivupalkki oikea	Side bar right		1	1	1
G	Kääntöjalka	Turning stand		1	1	1
H	Konekiinnike	Machine fastener		1	1	1
I	Kiinnitystappi	Fastening rod	Ø16 L=230	2	2	2
J1	Pitoventtiili	Retainer valve		1	1	1
J2	Vapaakiertohana	Free circulation valve		1	1	1
K1	Letku	Hose	L=1,000, 3/8"	1	1	1
K2	Letku	Hose	L=1,200, 3/8"	1	1	1
L	Tukirunko	Support frame		1	1	1
M1	Kuljetin osa 1	Conveyor part 1		1	1	1
M2	Kuljetin osa 2	Conveyor part 2		0	1	2
M3	Kuljetin osa 3	Conveyor part 3		1	1	1
N	Kuljettimen matto	Conveyor belt		1	1	1
O	Vetopää	Drive end		1	1	1
P	Alarulla	Bottom roller		1	1	1
Q	Liitoslatta	Connecting plate	5x30 L=380	2	4	6
R1	Ohjauslevy	Guide plate		2	2	2
R2	Päätylevy	Front plate		1	1	1
S1	Roskan erotin	Debris sieve		1	1	1
S2	Roskalevy	Debris plate		1	1	1
T	Ketju	Chain		2	2	2
U1	Letku	Hose	L=200, 3/8"	1	1	1
U2	Letku	Hose	L=250, 3/8"	1	1	1
U3	Letku	Hose	L=400, 3/8"	1	1	1
V	Tappi	Rod	D25 L=86	2	2	2
X	Vetoaisa	Drawbar		1	1	1

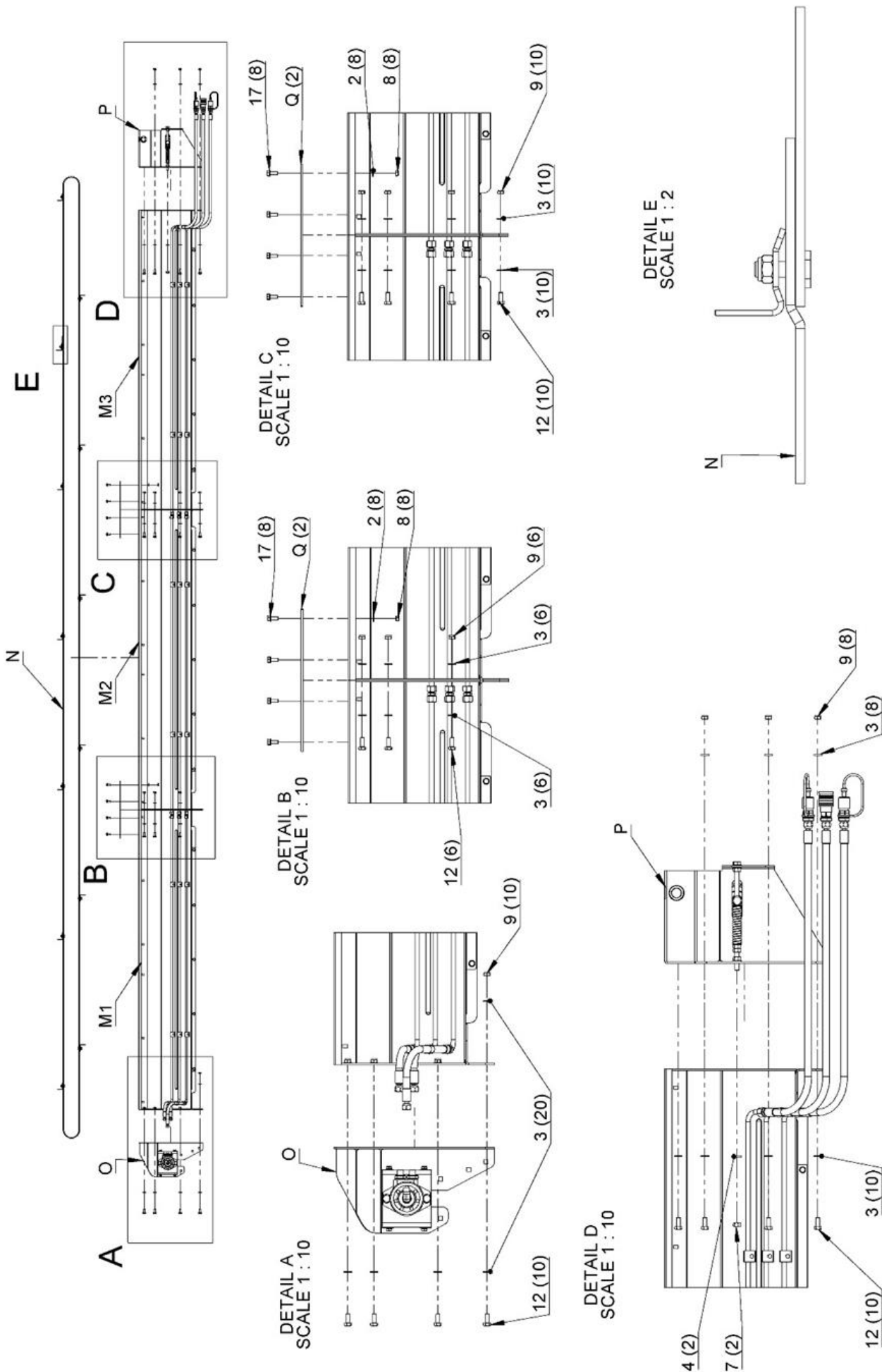
Section 1.



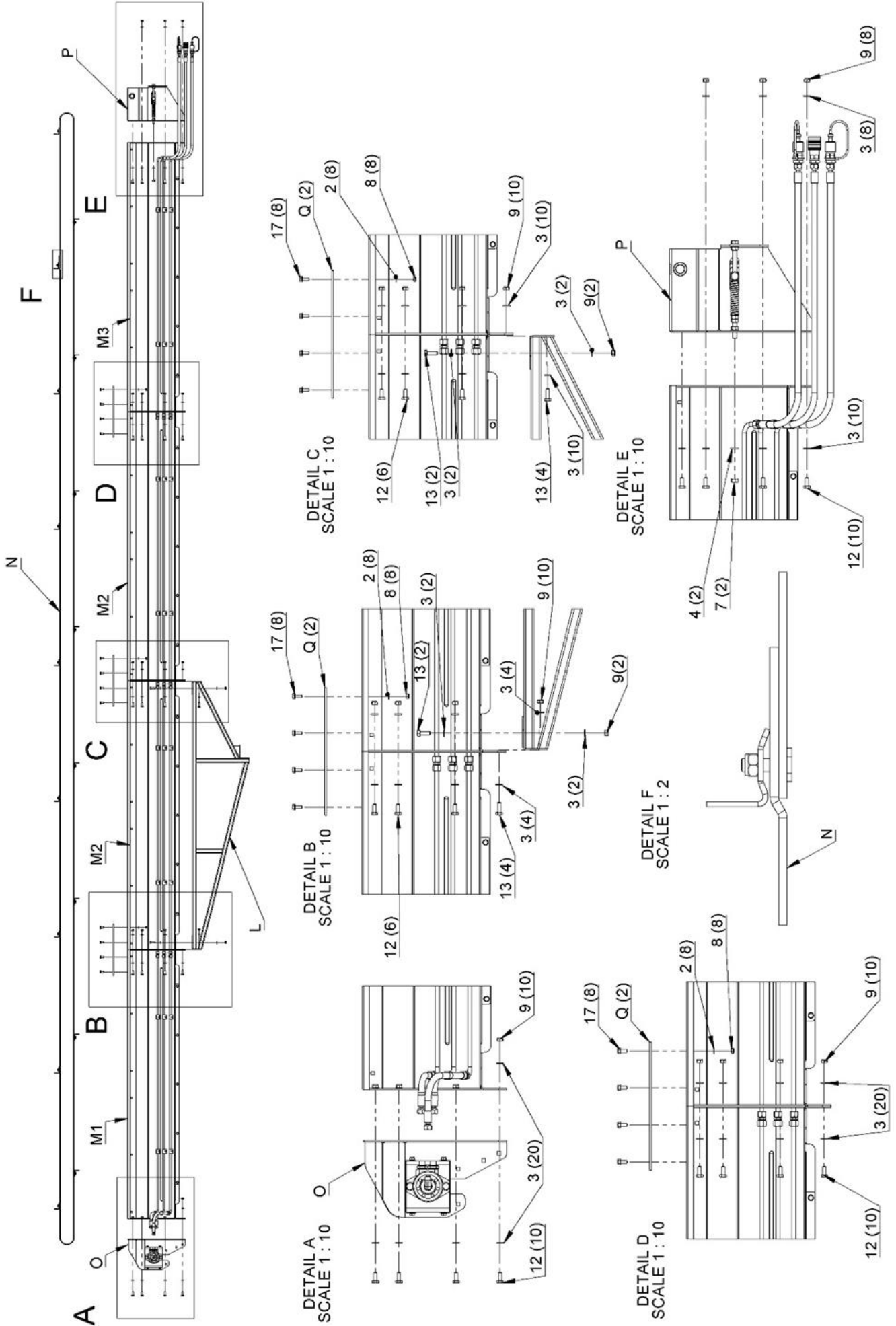
Section 2.1



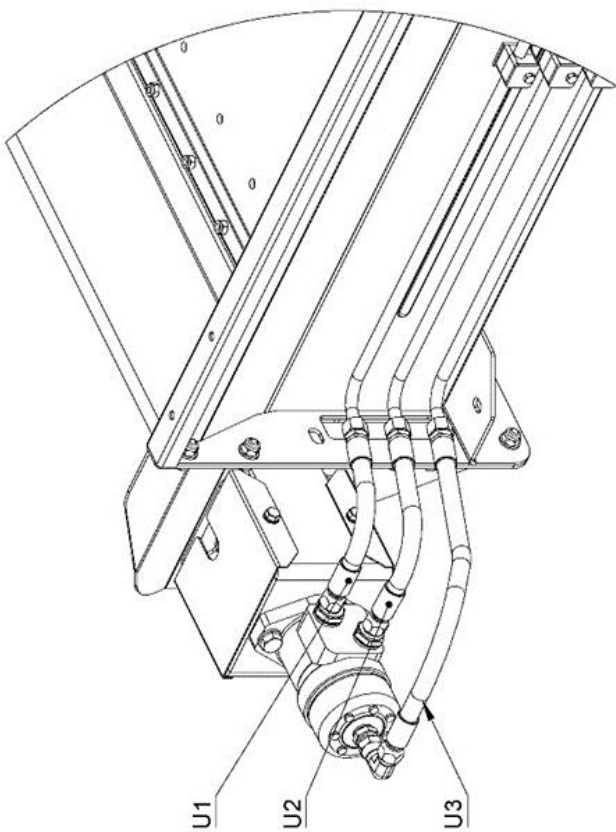
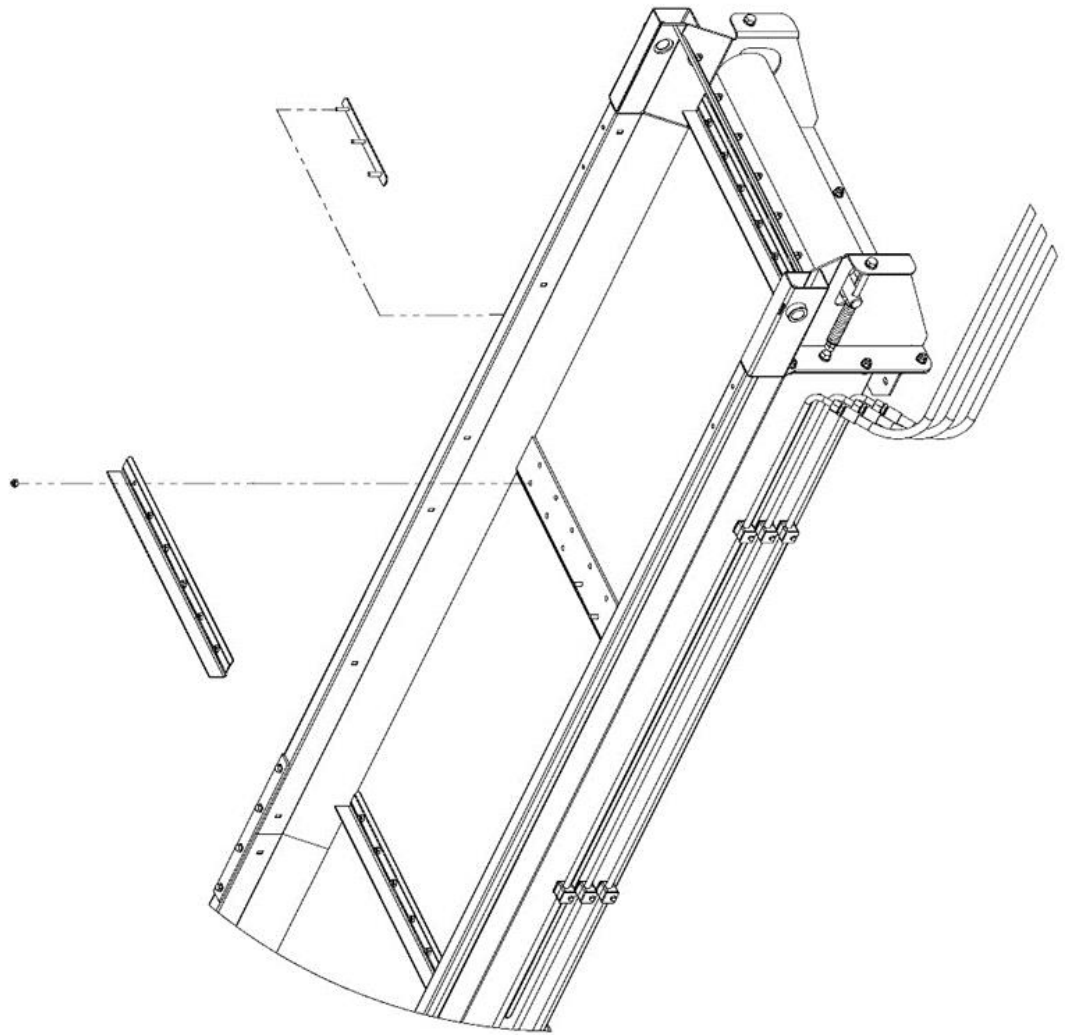
Section 2.2



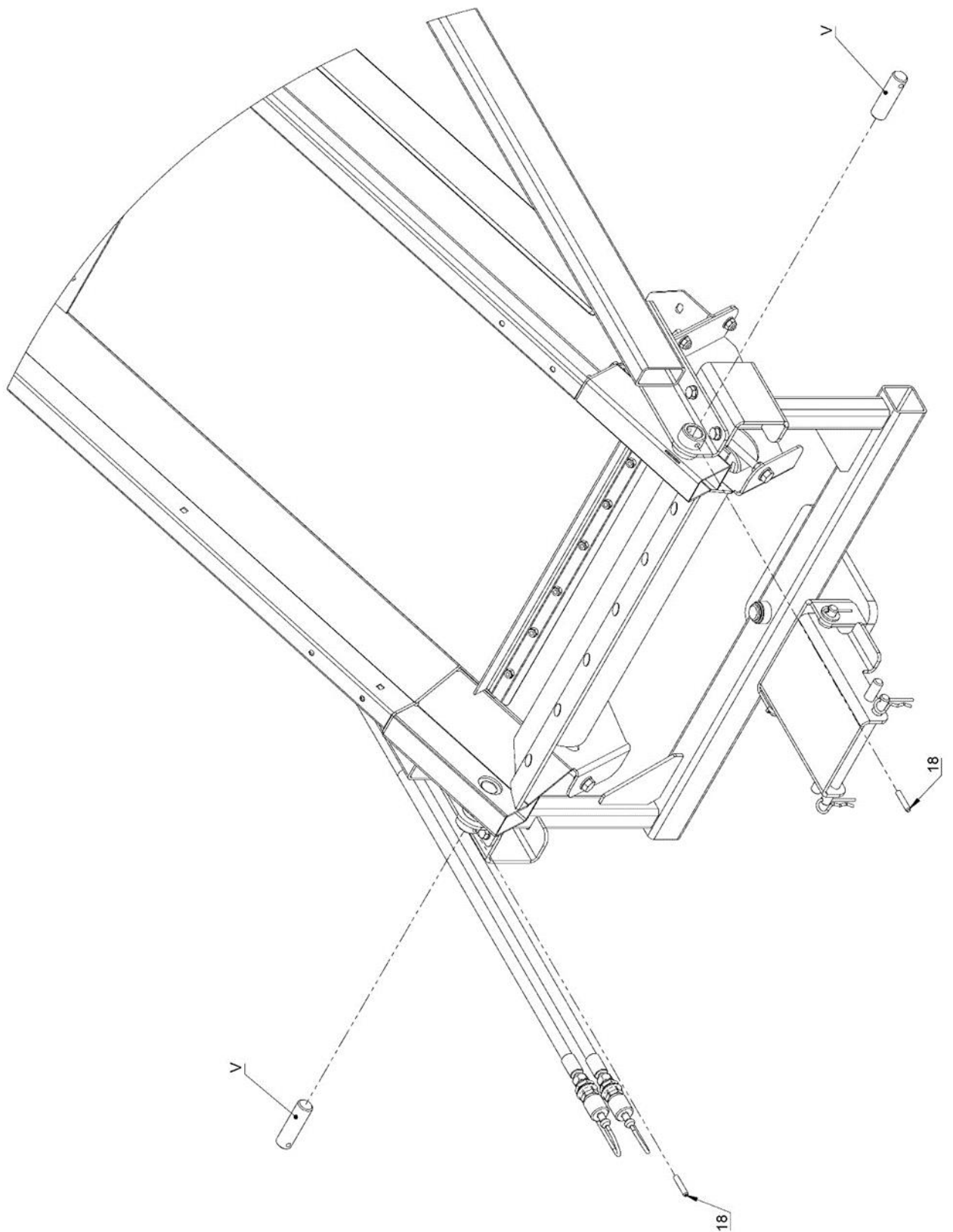
Section 2.3



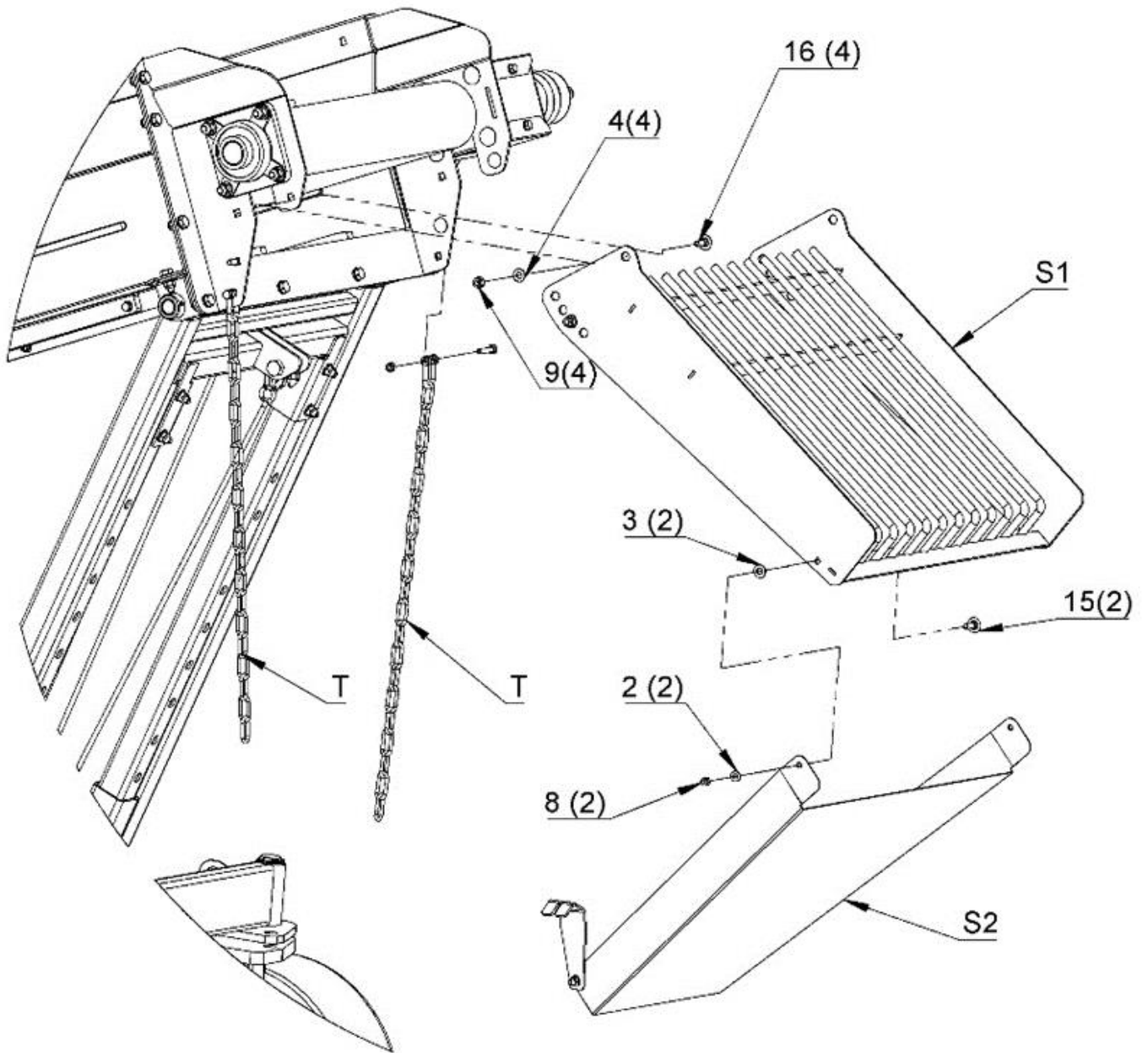
Section 3.



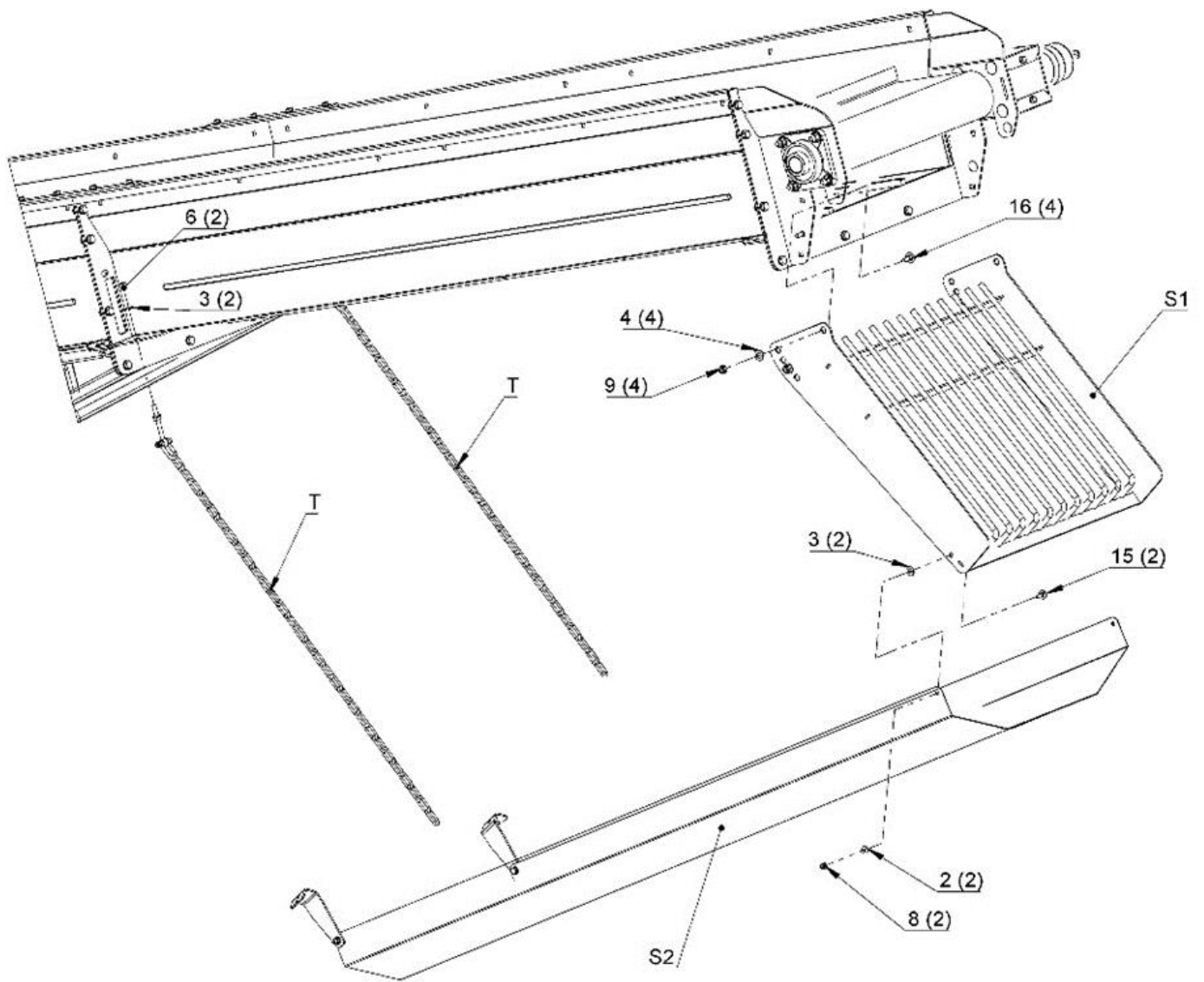
Section 4.



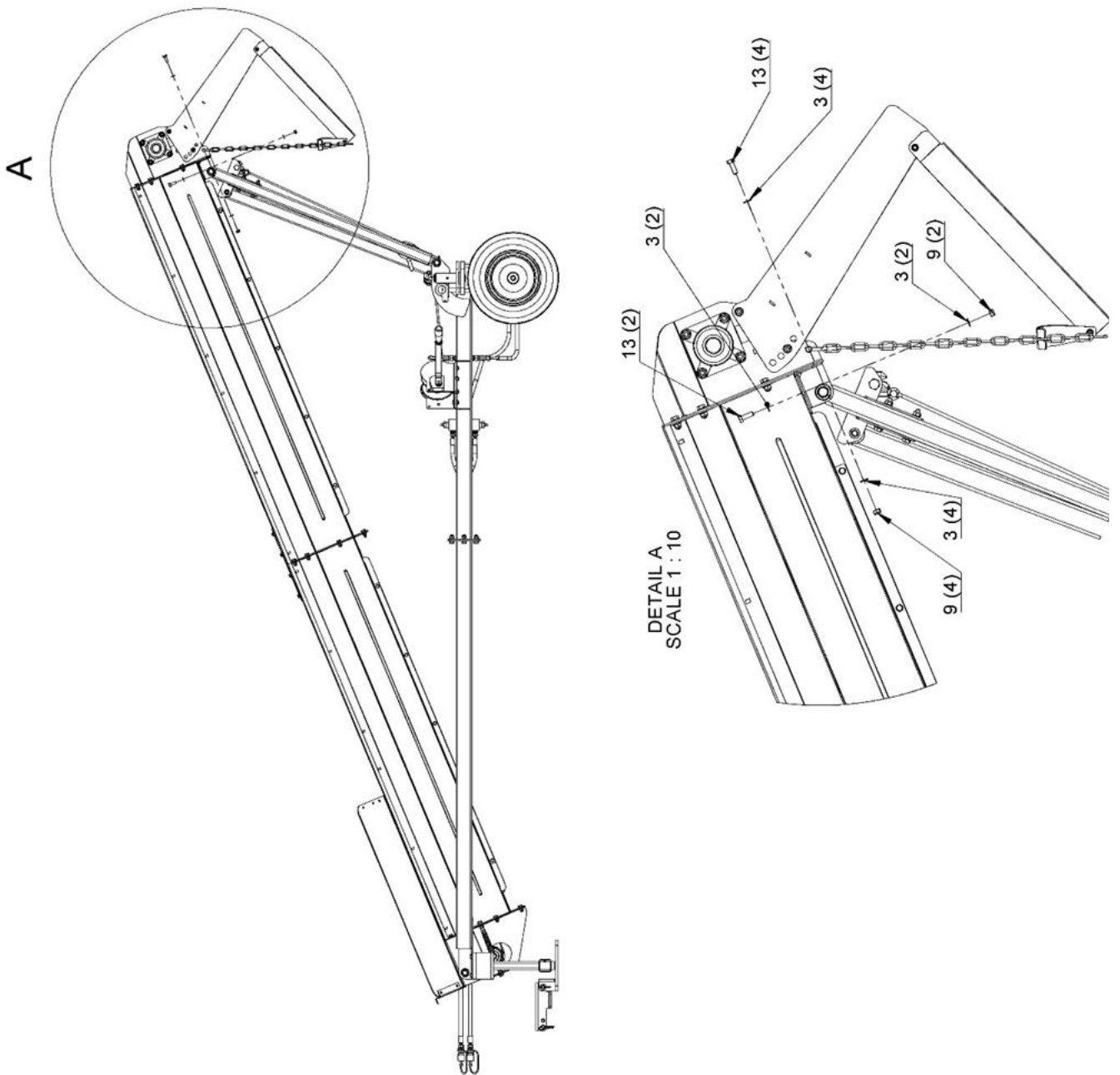
Section 5.1



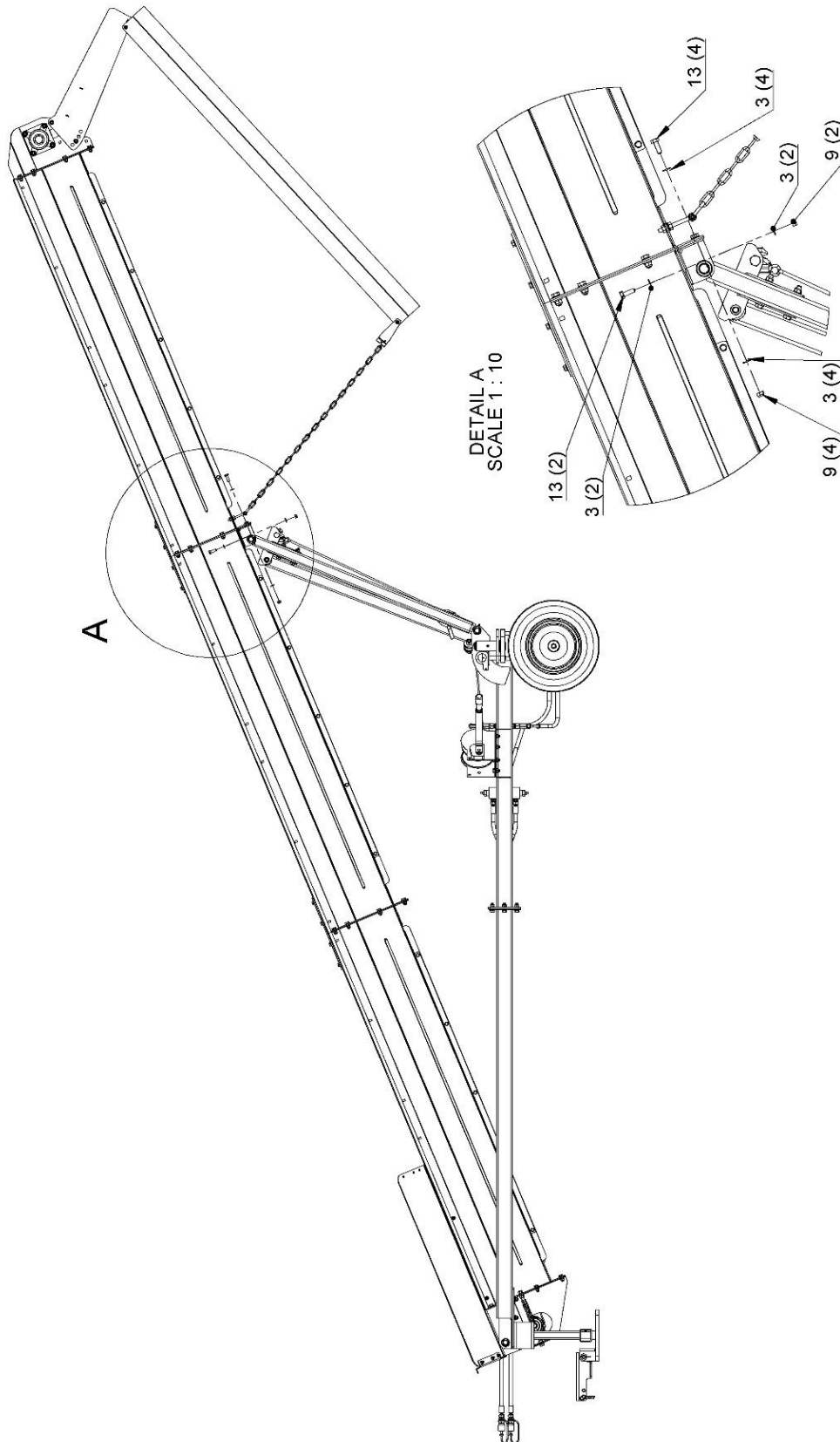
Section 5.2



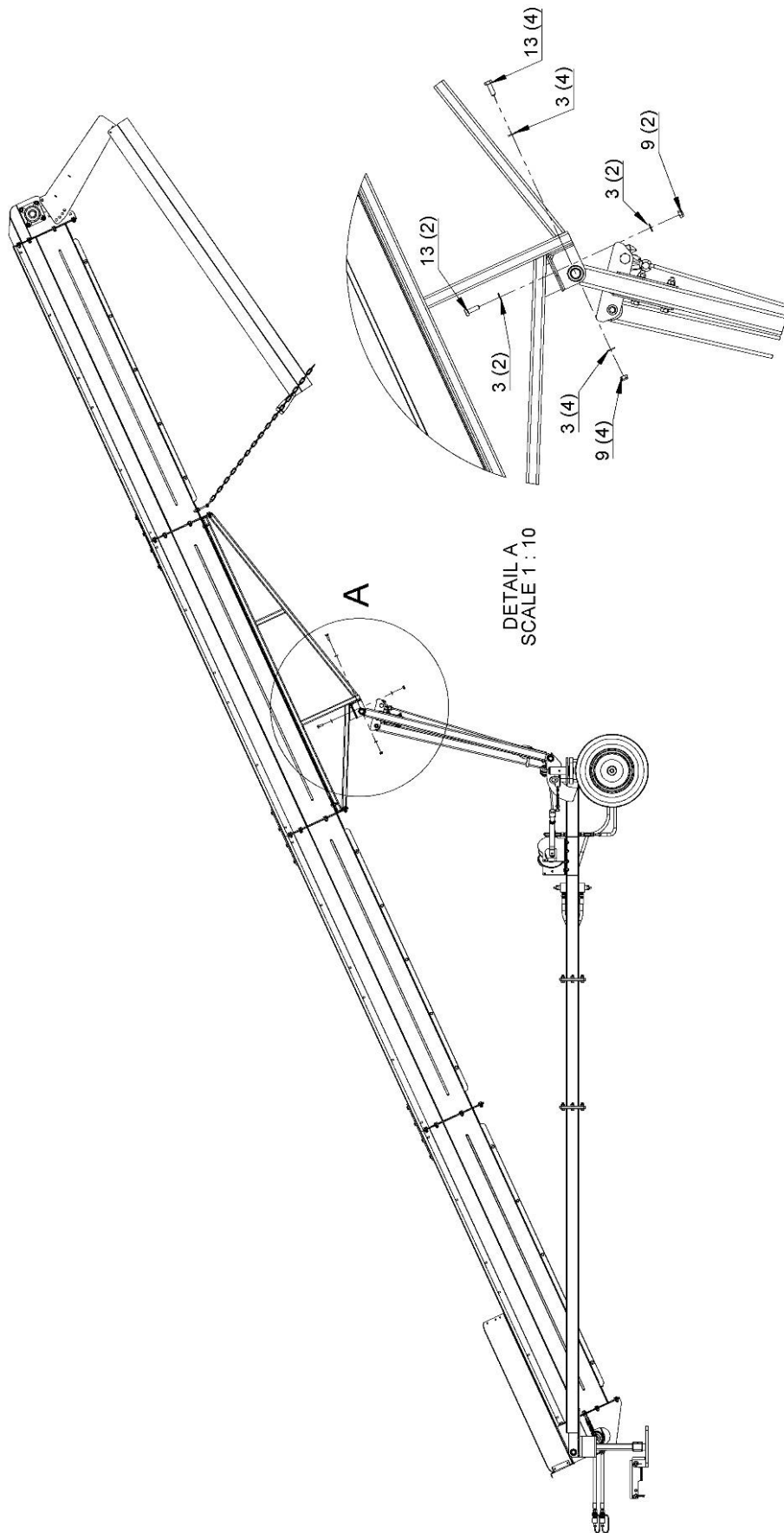
Section 6.1



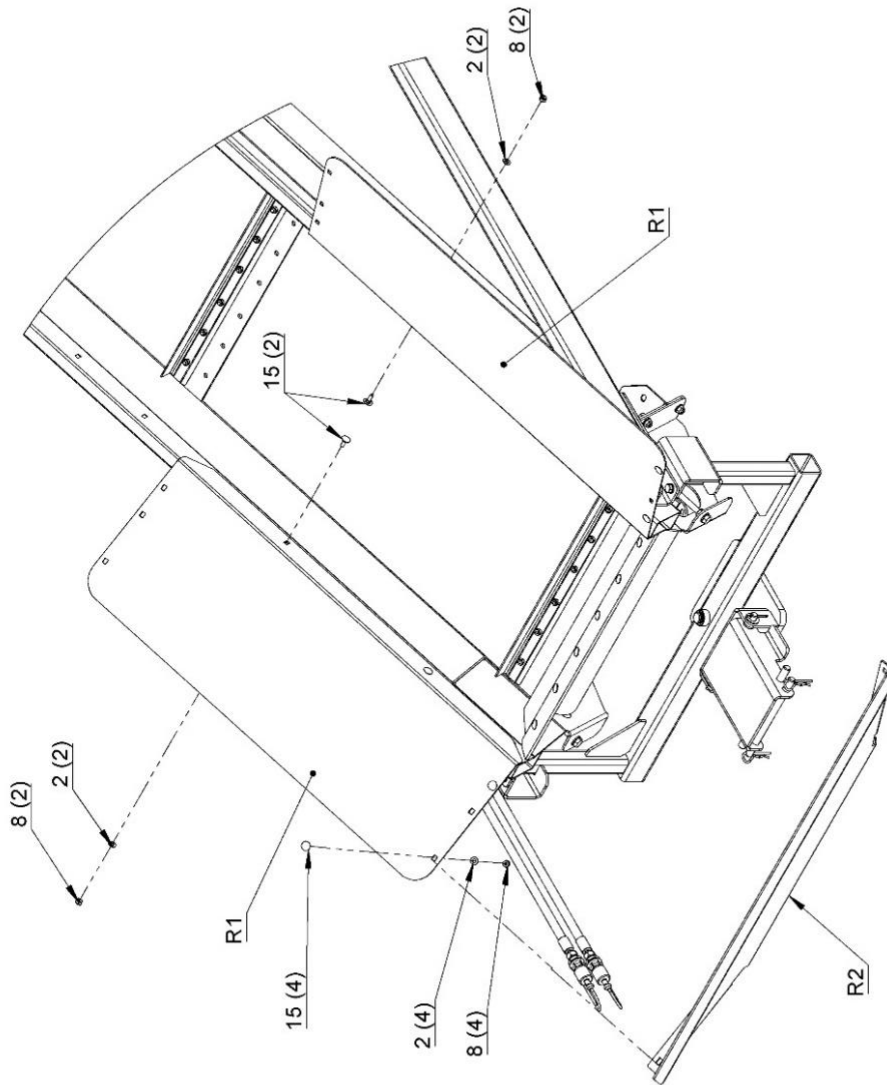
Section 6.2



Section 6.3



Section 7.



2.3. Connecting the conveyor to a firewood processor

These connection instructions apply to the Hakki Pilke 55 Pro firewood processor. Before connecting the conveyor, please ensure that it is compatible with the Hakki Pilke firewood processor to which it is intended to be connected!

1. Connect the conveyor to the firewood processor with a rod and pin, as shown in Figure 1.

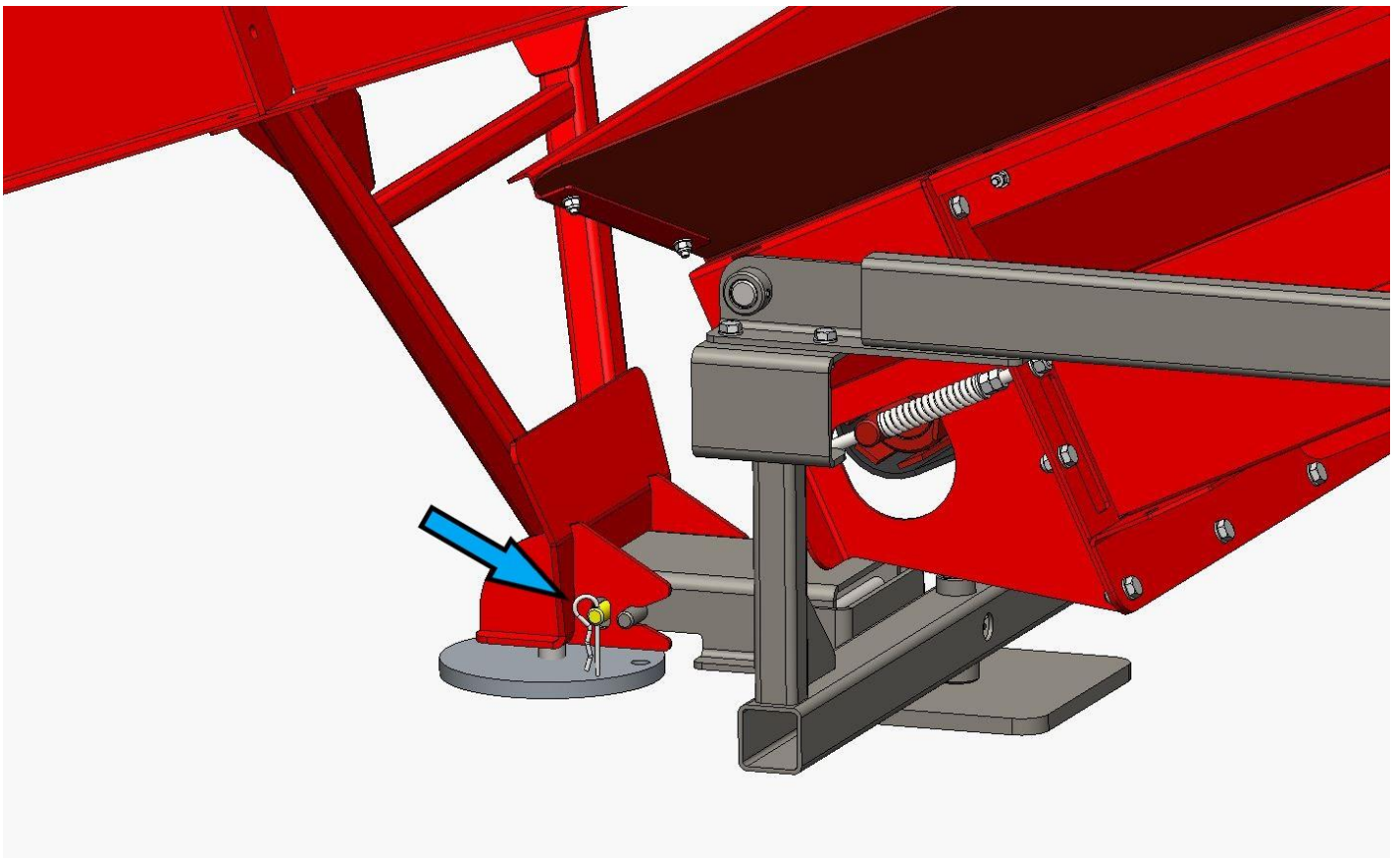


Figure 1.

2. Detach hydraulic hose B (Figure 2) from quick coupling A and attach XL Conveyor's pressure hose to quick coupling A (Figure 2).
3. Connect hydraulic hose B (Figure 2) to XL Conveyor's return hose (female quick coupling).
4. Connect XL Conveyor's overflow hose to quick coupling C (Figure 2).
5. Connect the conveyor's pivot motor hoses to quick couplings D and E (Figure 2a).

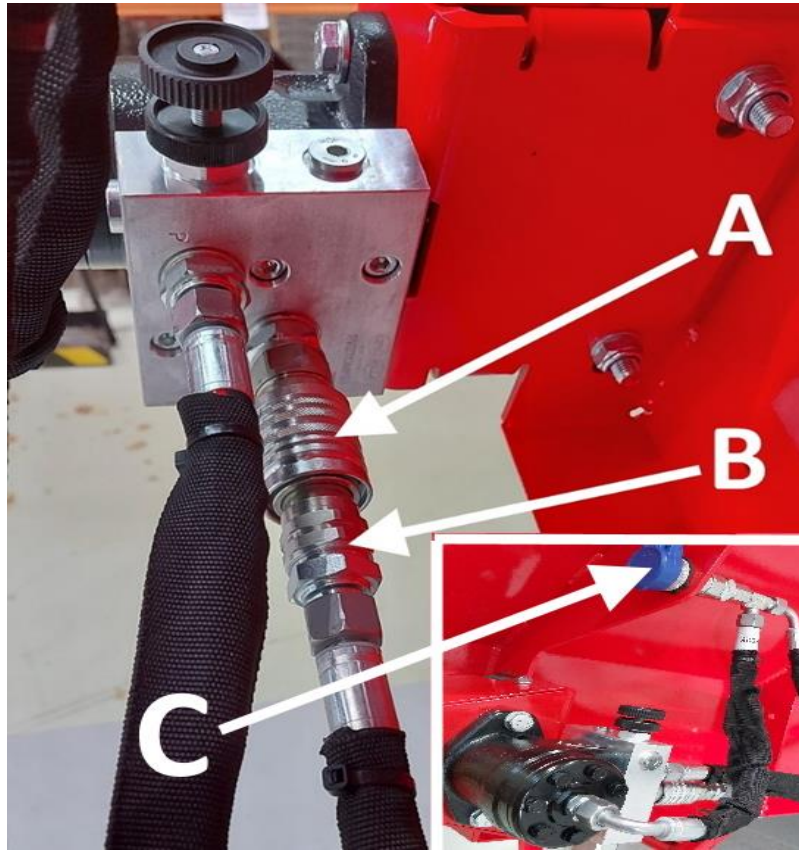


Figure. 2.

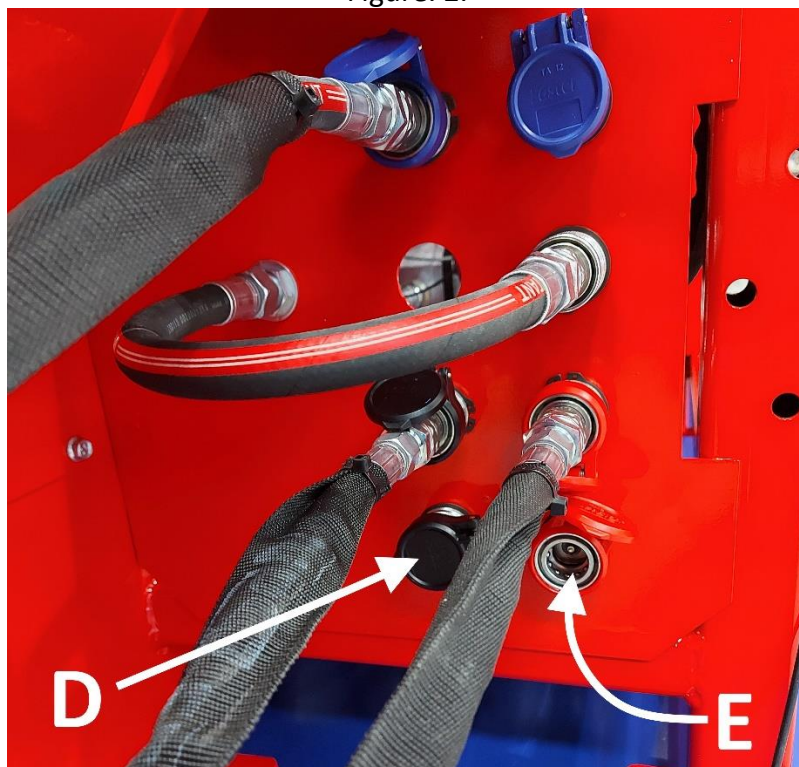


Figure 2a.

2.4.Using the out-feed conveyor

The out-feed conveyor is used with the control panel of the Hakki Pilke machine.

The running speed of the out-feed conveyor can be freely adjusted with adjustment screw C (Figure 3). If the conveyor is jammed for any reason, the conveyor must be stopped with lever B (Figure 1) and the machine shut down before the cause is removed. If the issue is at the end of the conveyor (a piece of wood is stuck between the conveyor and possible extension conveyor), the conveyor belt can be reversed for a short distance with lever B (Figure 1).



Figure 3.

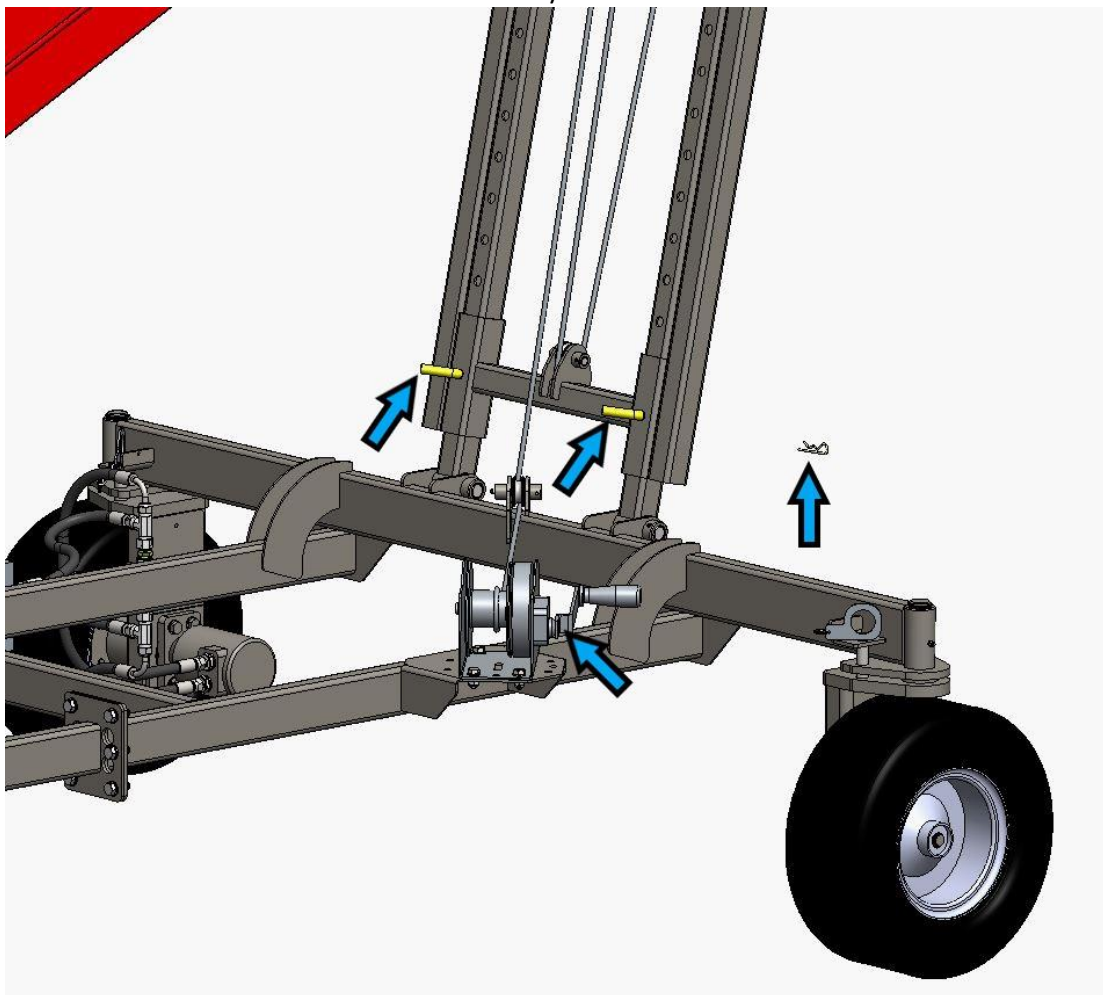


Figure 3a.

The inclination of the conveyor can be adjusted by turning the winch (Figure 3a) clockwise to increase the conveyor angle or anticlockwise to decrease the angle. Before using the winch, detach the locking rods and pins (2 pcs each) in Figure 3a. After adjustment, always lock the conveyor to rest on the locking rods and pins by inserting them in the closest possible holes. **Never leave the conveyor suspended from the winch alone!**

2.5. Adjusting the conveyor belt

The tightness (and alignment) of the conveyor belt can be adjusted as follows:

1. Loosen the tightening nut (upper) indicated by the arrow in Figure 4 from both sides.
2. Tighten/loosen the belt with the lower nut in Figure 4 (the same amount on both sides of the belt). If the belt is crooked, loosen the nut (in relation to the spring) on the side towards which you wish to align the belt.
3. When the conveyor belt is at the correct tension and properly aligned, tighten the fastening nuts (Figure 4) tightly against each other on both sides. Note! Do not overtighten the belt – the spring must have room to compress and expand. Note! If you run out of clearance to tension the belt, use the other fastening holes at the connection point.

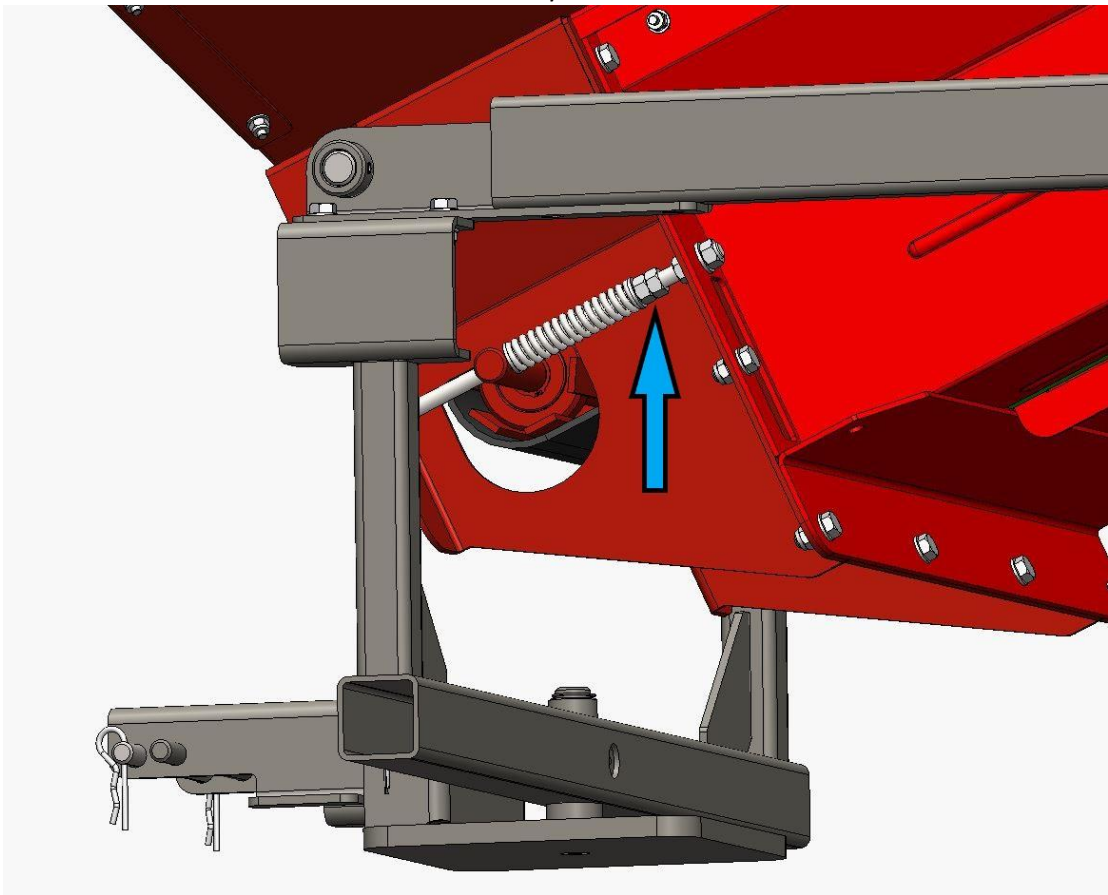


Figure 4.

The out-feed conveyor's belt can be replaced as follows:

1. Loosen the belt in accordance with the instructions provided above.
2. Rotate the connection point roughly to the halfway point of the conveyor.
3. Remove the connection plate bolts and remove the old belt.
4. Install the new belt in place in the reverse order.

2.6. Turning the conveyor

XL Conveyor can be pivoted laterally by using the firewood processor's hydraulics (e.g. Hakki Pilke 55 Pro). **The conveyor wheels and the oil flow valve must be turned to the correct position before pivoting the conveyor!**

Turn the wheels and valve to the pivot position as follows:

1. Lift the wheel locking rods (Figure 5) to the upper position, and turn the wheels to the correct position, as shown in Figure 5.
2. Lock the rods indicated with the arrow (2 pcs) to the lower position, which locks the wheels to the pivot position.

3. Turn the valve indicated with an arrow in Figure 5 to the horizontal position so that hydraulic oil can flow into the wheel's drive motor.

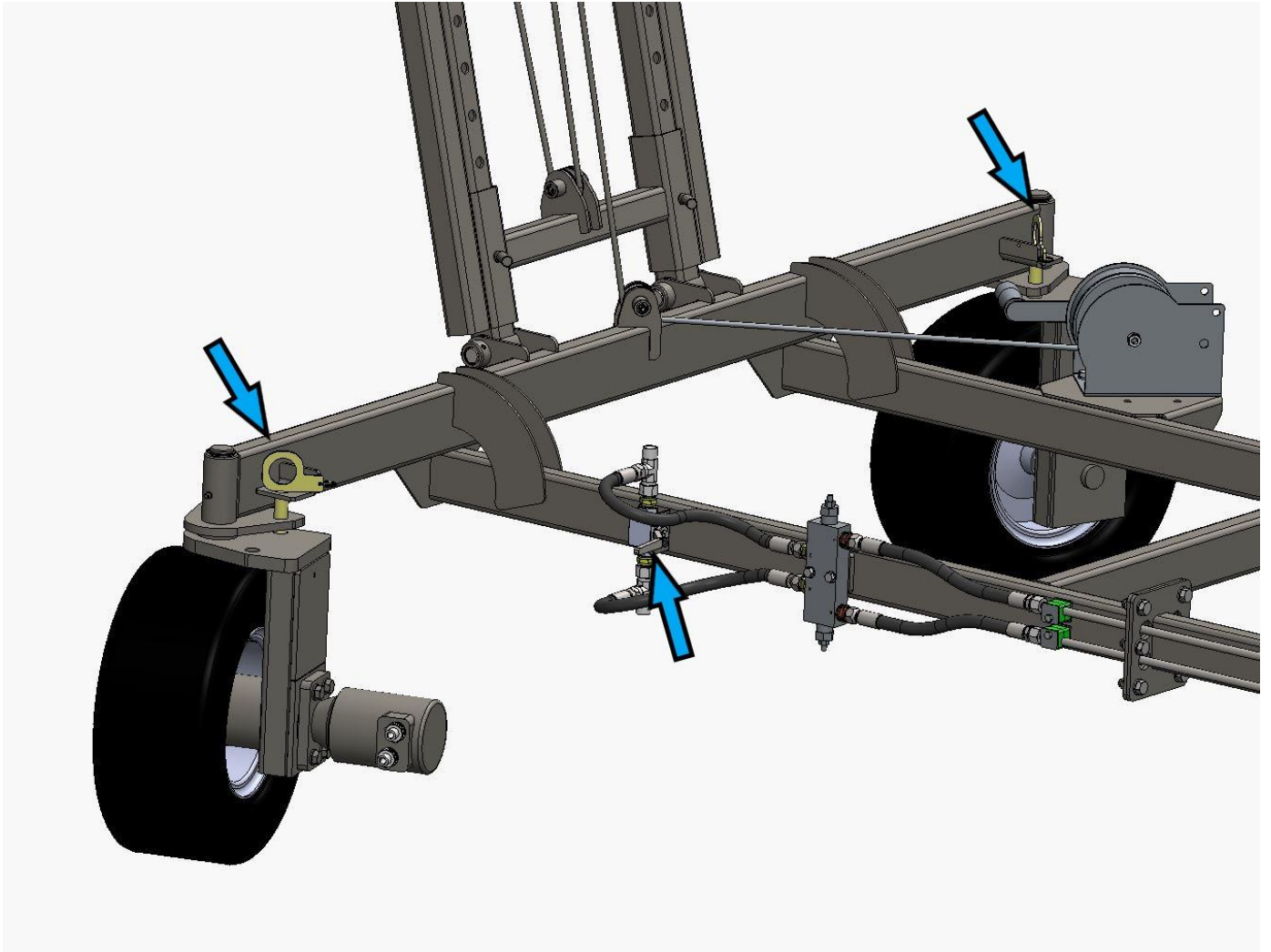


Figure 5.

You can then pivot the conveyor to the left/right with e.g. the Hakki Pilke 55 Pro firewood processor's hydraulics by pushing/pulling lever C (Figure 6).

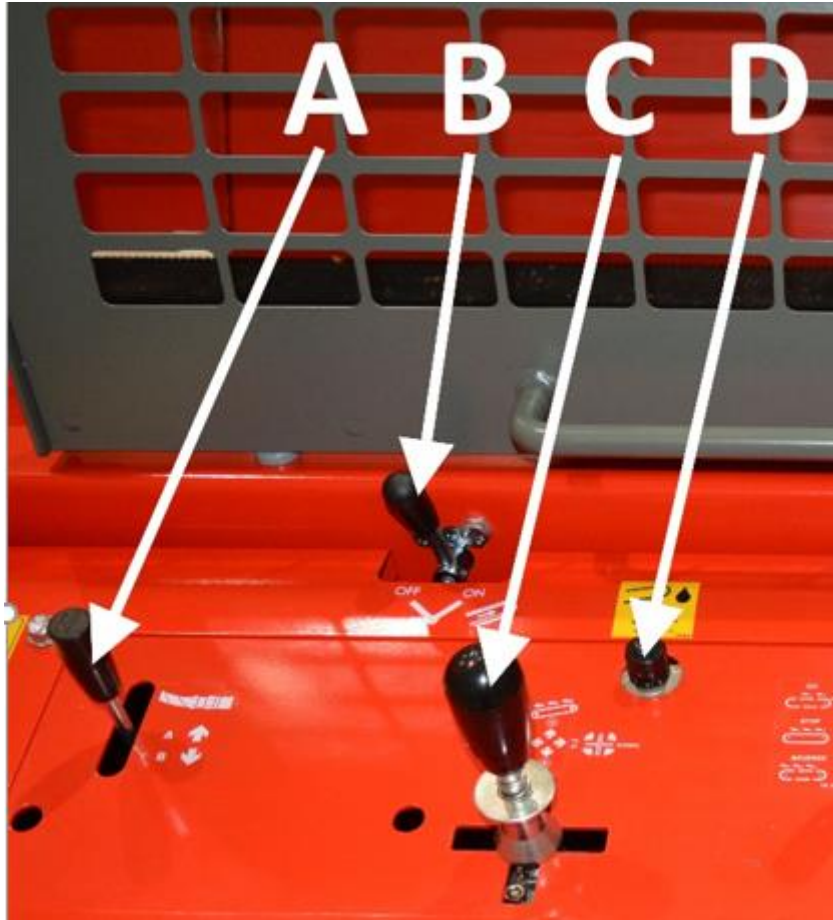


Figure 6.

2.7. Transporting the conveyor

The conveyor can be transported on its wheels for short distances in yard areas, for example. Towing the conveyor on public roads is prohibited!

Set the conveyor to transport position as follows:

1. Detach the conveyor from the firewood processor by removing the rod and pin shown in Figure 2.
2. Install the conveyor drawbar, as shown in Figure 7, and lock the locking pin indicated with an arrow (both sides).

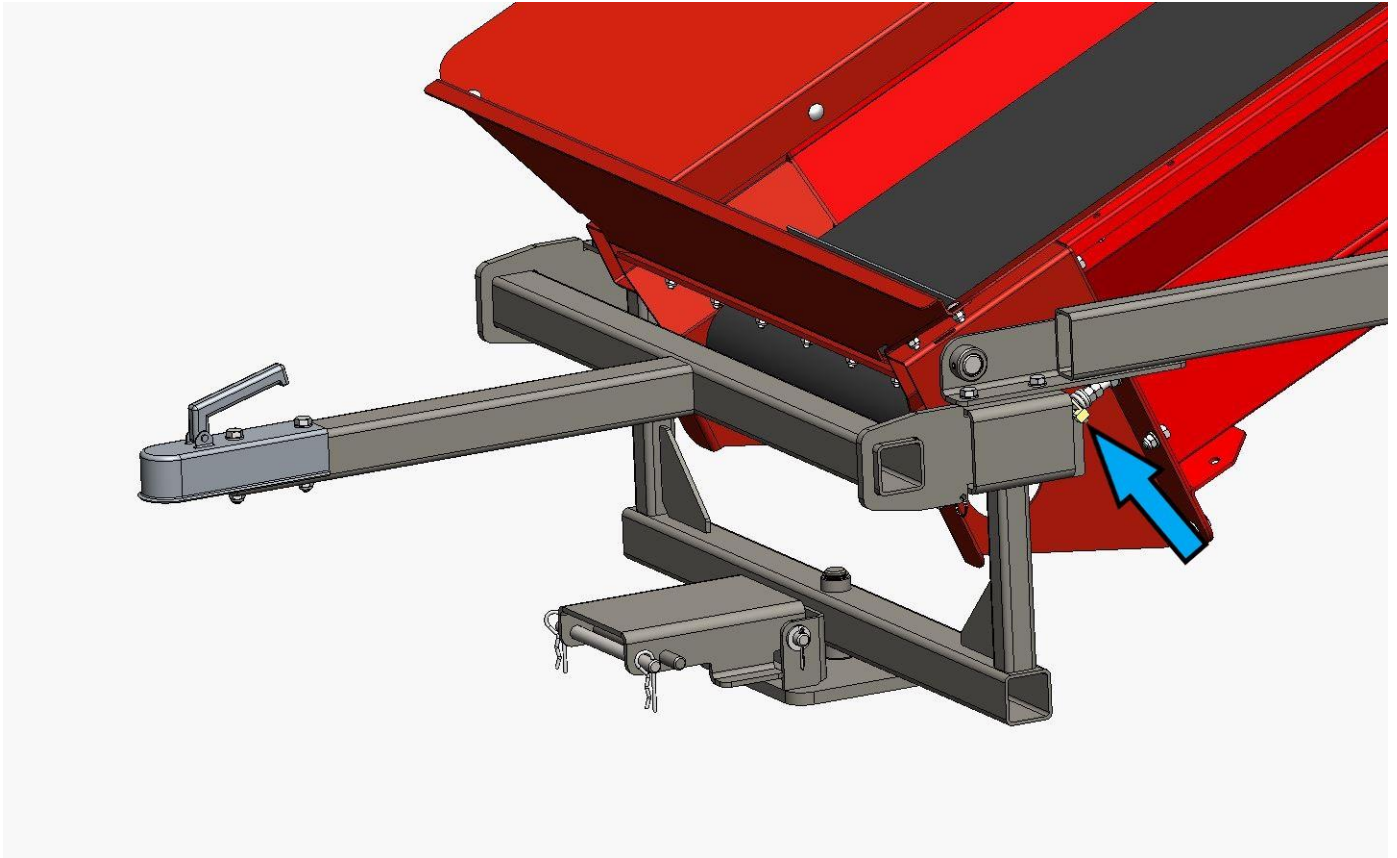


Figure 7.

3. Straighten the conveyor wheels and lock them in place with the locking rods, as shown in Figure 8.
4. Turn the valve in Figure 8 to the lower position so that the hydraulic oil can flow freely into the wheel's hydraulic motor.

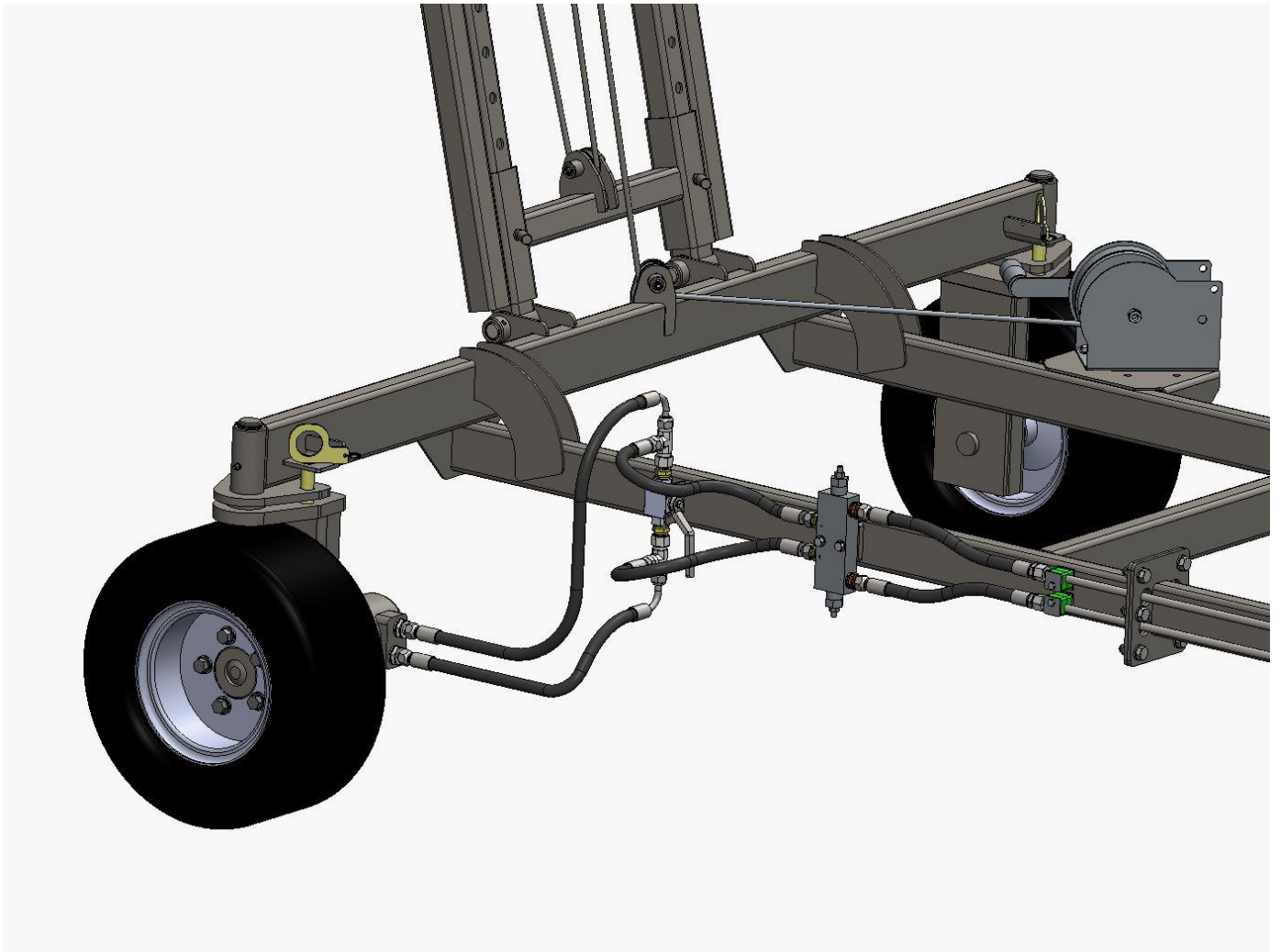


Figure 8.

2.8. Adjusting the debris removal sieve

The debris removal sieve can be adjusted to four different positions by changing the screws in Figure 8a (both sides) to different holes. The angle of the debris removal plate can be changed with the chain links.

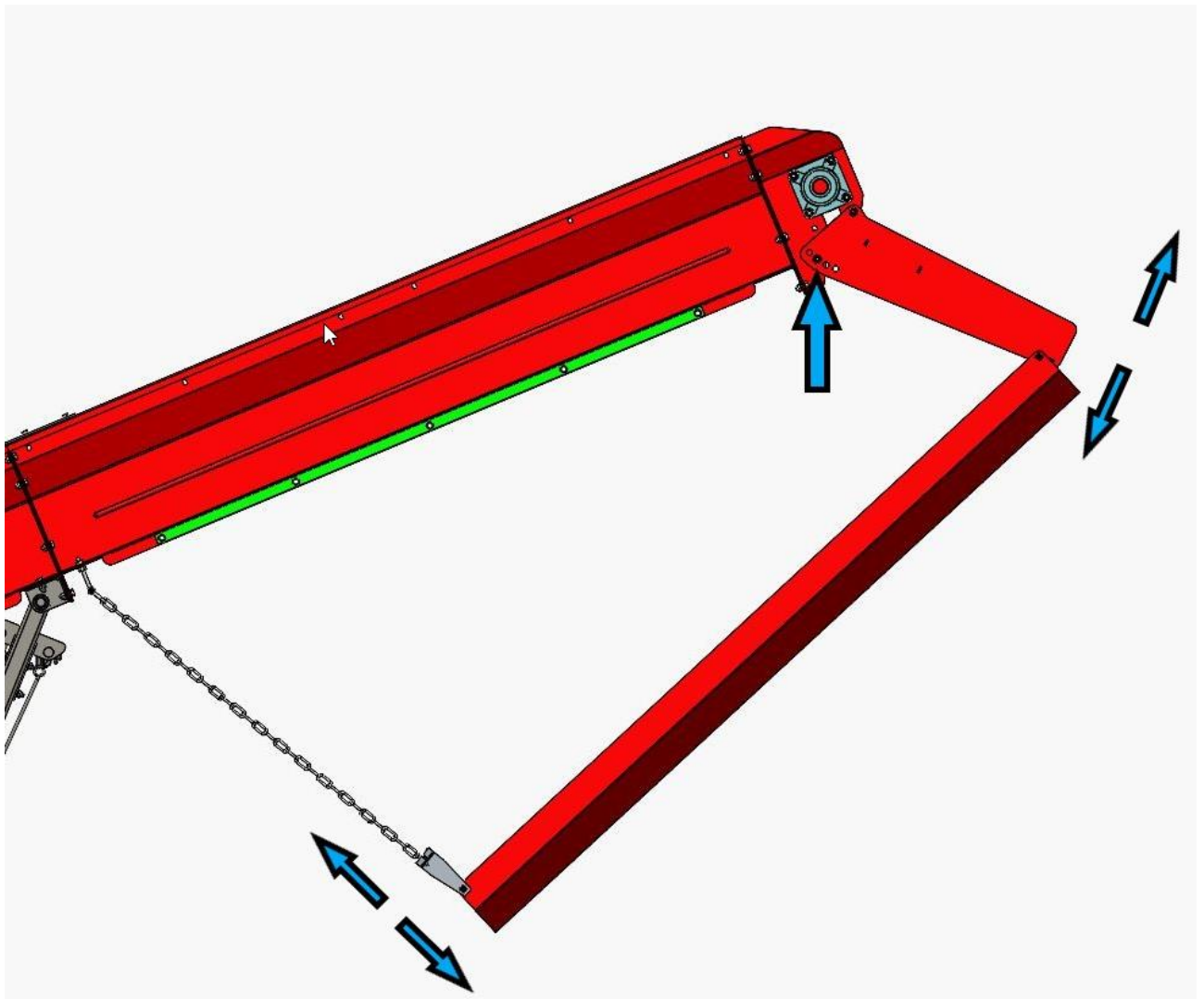


Figure 8a.

2.9. After use

5. After you have finished making firewood, stop the out-feed conveyor and remove the firewood from the conveyor.
6. Ensure that the machine has not been damaged.
7. Ensure that the machine can be moved safely off the processed firewood.
8. Clean the machine.


If you will not be using the firewood processor for a while, do the following:

9. Store the machine according to the instructions in Section 2.13.

2.10. Machine maintenance

The machine must be disconnected from its power source before any maintenance, adjustment, replacement or cleaning measures. Only use spare parts that are supplied by the manufacturer or your retailer. If the guards of the machine have to be removed for maintenance, they must always be reattached before the machine is activated. After maintenance and adjustment measures, the machine must be test run according to the instructions in Section 4.1.

2.11. Lubrication

All other lubrication points of the machine are marked with a  label presented in the figures below.

1. Bottom roller nipples (2 pcs, Figure 9).

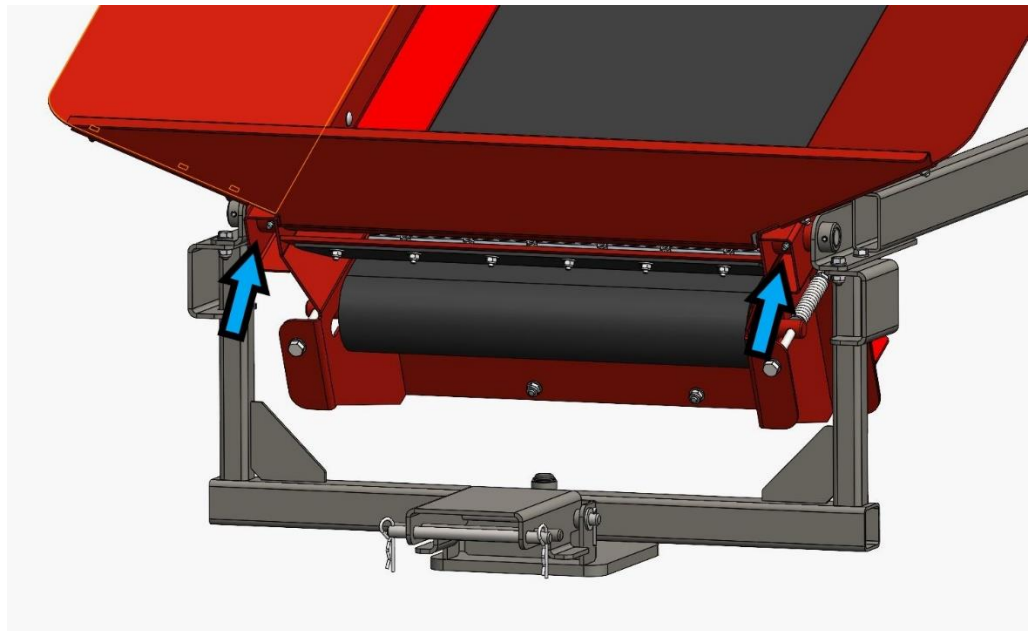
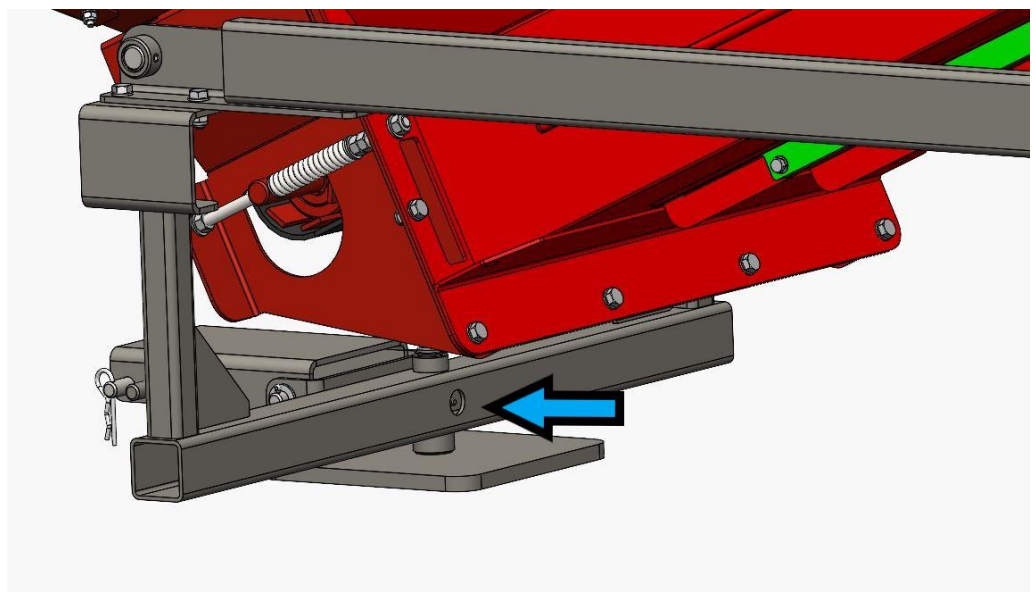


Figure 9.

2. Turning device nipple (1 pc, Figure 10).



3. Lifting device nipples (9 pcs, Figure 11).

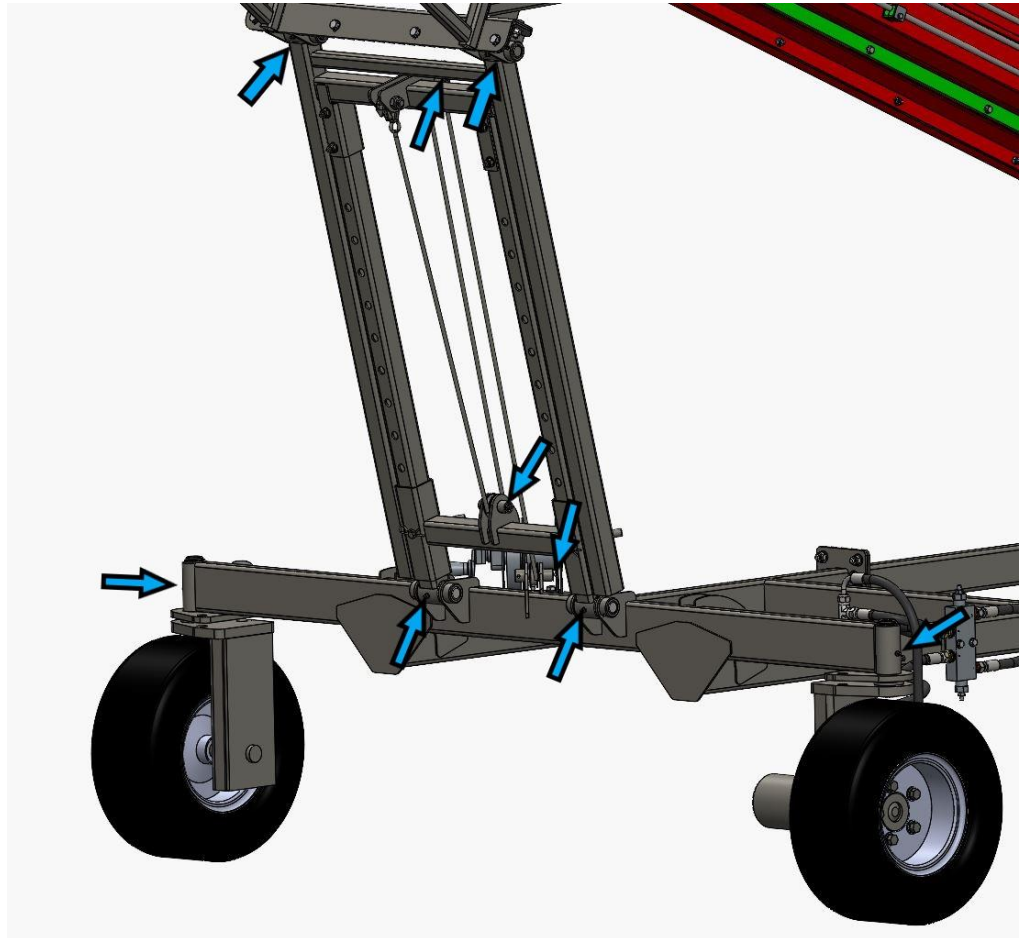


Figure 11.

4. Top roller nipples (2 pcs, Figure 12).

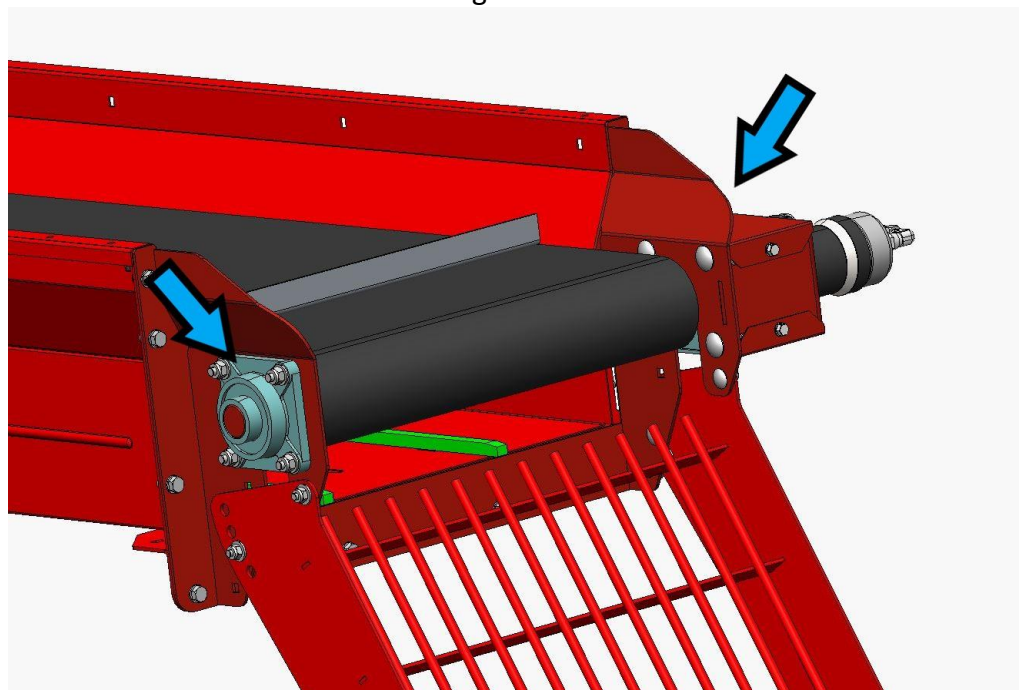


Figure 12.

2.12. Washing and cleaning

Any loose dirt and sawdust can be removed from the machine with pressurised air, for example. The machine can also be washed with a high-pressure washer, as long as the water jet is not aimed directly at the bearings or electrical equipment.

Always ensure that the machine and the working area are sufficiently clean during operation. The machine must always be cleaned after use. Clean the machine at suitable intervals and always before storing the machine for a prolonged time. After washing, the firewood processor must be lubricated according to the instructions in Section 6.

2.13. Storage

Although the machine is intended for outdoor use, it should be covered and stored in a sheltered location or indoors. Before prolonged storage, the machine must first be cleaned, then washed according to the instructions in Section 9 and lubricated according to Section 6.

3. Guarantee terms

“Guarantee terms come into force when you register your customership in the extranet service.”

The guarantee is valid for the original buyer for 12 months, starting from the date of purchase, but for no more than 1,000 operating hours.

Always contact the machine’s seller before undertaking any procedures in matters concerning the guarantee.

A guarantee claim must be issued to the seller in writing **immediately** upon the discovery of a defect. If the defect concerns a damaged part or component, please send a photograph of the damaged part or component to the seller, if possible, so the fault can be identified. When submitting a guarantee claim, the buyer must always include the type and serial number of the machine in the claim and present a receipt that includes the date of purchase. Guarantee claims must be submitted to an authorised retailer.

The guarantee covers

- Parts damaged in normal use due to faults in the material or manufacturing.
- Reasonable repair expenses in accordance with the agreement between the seller or buyer and the manufacturer. Faulty parts will be replaced with new ones. A faulty part or parts replaced due to a material fault must be returned to the manufacturer via the retailer.

The guarantee does not cover

- Damage caused by normal wear and tear (such as saw blades and belts), improper use or failure to observe the instruction manual.
- Damage caused by negligence of maintenance or storage procedures detailed in the instruction manual.
- Damage occurred in transport.
- Cutting blades, V-belts and oil, as well as normal adjustment, care, maintenance or cleaning procedures.
- Defects in a machine to which the buyer has performed or commissioned structural or functional changes, to the degree that the machine can no longer be considered equivalent to the original machine.
- Other potential costs or financial obligations resulting from the procedures mentioned
- above.
- Indirect costs.
- Travel costs resulting from guarantee repairs.
- The guarantee for parts replaced during the guarantee period of the machine expires at the same time as the machine’s guarantee.
- The guarantee is void if the ownership of the machine is transferred to a third party during the guarantee period.
- The guarantee is void if any of the machine’s seals have been broken.

If a fault or defect reported by the customer is found not to be covered by the guarantee, the manufacturer has the right to charge the customer for the identification and possible repair of the fault or defect in accordance with the manufacturer's current price list.

This guarantee certificate indicates our responsibilities and obligations in full and excludes all other responsibilities.

7. Declaration of incorporation for partly completed machinery

(Machinery Directive 2006/42/EC, Annex II B)

Manufacturer: TP Silva Oy

Address: Valimotie 1, FI-85800 Haapajärvi, Finland

Name and address of the person who is authorised to compile the technical file:

Name: Timo Jussila

Address: Valimotie 1, FI-85800 Haapajärvi, Finland

The aforementioned person assures that

Hakki Pilke XL Conveyor, firewood conveyor (accessory to Hakki Pilke firewood processor)

Serial number:

- is compliant with the applicable regulations of the Machinery Directive (2006/42/EC).

This partly completed device may only be connected to a compatible Hakki Pilke firewood processor.

Location and date: Haapajärvi 1 April 2021

Signature:



*Anssi Westerlund
Business Director*