

Hakki Lift Falcon

LOG LIFTER

- Operator's manual
- EC Declaration of Conformity
- Safety instructions
- Guarantee terms
- Exploded view and parts list



The operator must read and understand these instructions before operating the machine!

Valimotie 1, FI-85800 Haapajärvi, Finland
Tel. +358 (0)8 772 7300, Fax +358 (0)8 772 7320

info@maaselankone.fi
www.maaselankone.fi

Table of contents

1.	General information	3
1.1.	Introduction	3
1.2.	Purpose of use and basic information	3
1.3.	Safety instructions	3
2	Delivery inspection	4
3	Lifting the device.....	4
4	Installing the hoist onto the firewood processor	5
5	Using the log lifter	7
6	Placing the log lifter in the transport position	9
7	Transporting the firewood processor and lifter for short distances	11
8	Lubrication	13
9	Exploded view 1.....	14
10	Exploded view 2	16
11	Parts list.....	17
12	Guarantee terms	18
	The guarantee covers	18
	The guarantee does not cover	18
13	EC Declaration of Conformity for the machine.....	19

1. General information

1.1. Introduction

The purpose of this manual is to ensure that the device is used in the manner intended by the manufacturer, taking safety into consideration. Everyone operating the device or working in close proximity to it must study this manual carefully.

Additional information on Maaselän Kone Oy's products is available on our website at www.hakkipilke.fi.

Keep this manual in the immediate vicinity of the device.

1.2. Purpose of use and basic information

The Hakki Lift Falcon log lifter is intended for lifting logs into the Hakki Pilke Falcon firewood processor. The maximum log diameter is 35 cm and the maximum length is 4 m. A log to be lifted may not weigh more than 400 kg. **These values must not be exceeded.**

The serial number, manufacturing year and weight are listed in the grey type plate (see figure below) on the body of the device.



1.3. Safety instructions

- This device is intended to be operated by only one operator. The danger zone is 10 m from the machine.
- Persons under 18 may not operate the device.
- The operator must ensure that use of the device does not cause danger to others and that there are no unauthorised persons in the danger zone.
- The device may not be operated while under the influence of alcohol or drugs, or when tired.
- The device may not be operated unless the operator has familiarised themselves with this instruction manual.

- The device has been designed solely for the purpose of lifting timber.
- The device must be set up for transport whenever it is moved.
- The operator may not modify the structure or functionalities of the device.
- The operator must wear sufficiently tight-fitting work clothing, protective goggles and safety footwear.
- Logs must always be lifted in such a way that they stay on the lifter and do not roll or get thrown off the lifting beams due to imbalance.
- Only use the device to lift one log at a time, and position the logs so that the base end is facing the firewood processor.
- Do not use the device to lift a log if the log or part thereof only rests on the other lifting beam.
- The device may only be used to lift logs without branches.
- Other people or animals or anything that may be damaged during operation must be kept away from the vicinity of the machine.
- The device must be on a level surface during operation. The lifting beams of the device must always be lowered when positioning a log on the device. When lowering the lifting beams, wood or other material must not be caught under them. Roll logs onto the lifting beams carefully so as to ensure that no danger or injuries are caused to the operator. The operator of the device must beware of logs on the possible log pile rolling off the pile and causing injuries.

2 Delivery inspection

Check that the machine has not sustained any damage during transport, and ensure that all necessary parts are included in the package. In the event of any defects or damage, contact the retailer immediately.

3 Lifting the device

Only lift the device by the indicated lifting points with a fork lift, for example.



Figure 1. Label indicating the lifting point

4 Installing the hoist onto the firewood processor

1. Attach the lifter's fastening plate A to the processor with five bolts, and, if necessary, attach fastening pin B to the plate, as shown in Figure 2.

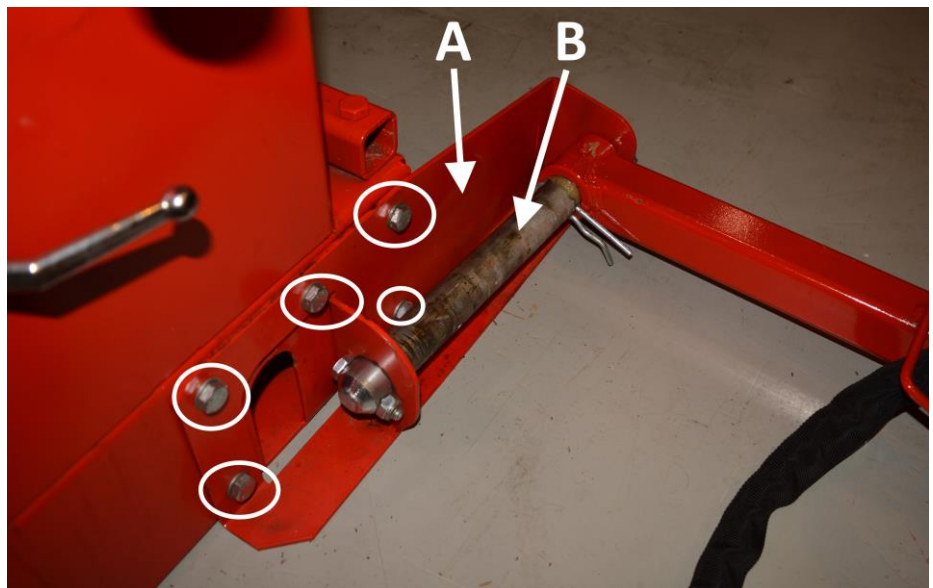


Figure 2. Attaching the lifter to the firewood processor.

Note! The log lifter is in the **transport position** in Figure 2a to the right.

Place the lifter in the **operating position** by removing locking pin C, pushing lifting beam D to area B and inserting locking pin C in

the left-hand slot.

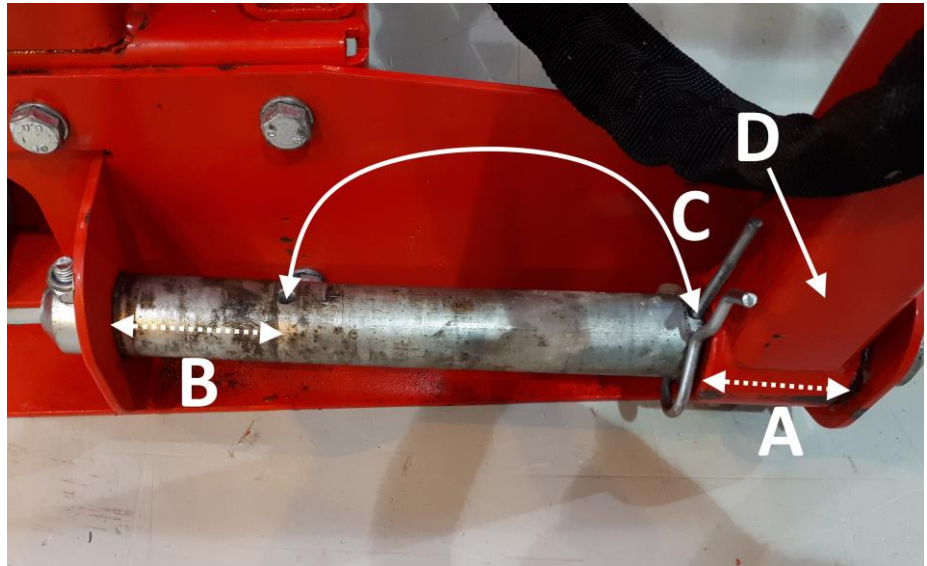


Figure 2a.

2. Connect the lifter hoses to quick couplings A and B, as shown in Figure 3.
3. In other words, connect the hose marked with a red cable tie to quick coupling A.



Figure 3. Connecting the hydraulic hose to the machine.

3. Lower the lifter to the bottom position by pushing the control lever in Figure 4.



Figure 4. Log lifter control lever

4. Attach the transport position holder to the firewood processor with two bolts as shown in Figure 5. Note! The smaller bolt goes in the left hole and the larger one goes in the right hole.



Figure 5. Transport position holder.

5 Using the log lifter

1. Roll a log onto the lifter and raise the device to the upper position **by pulling the lever** shown in Figure 4.



Figure 6.

2. When the lifter reaches the upper position, roll the log onto the firewood processor's input conveyor and move the log forward with the processor's controls.
Note! Lower the lifter if necessary so that the input conveyor belt grips the log properly.



Figure 7.

ALWAYS ENSURE THAT THE LOG BEING LIFTED DOES NOT STRIKE YOU OR THE MACHINE CAUSING INJURIES OR DAMAGE!

6 Placing the log lifter in the transport position

1. Raise the firewood processor's input conveyor to the transport position.
2. Release the lifter's position lock by removing hitch pin B and locking pin A shown in Figure 8.

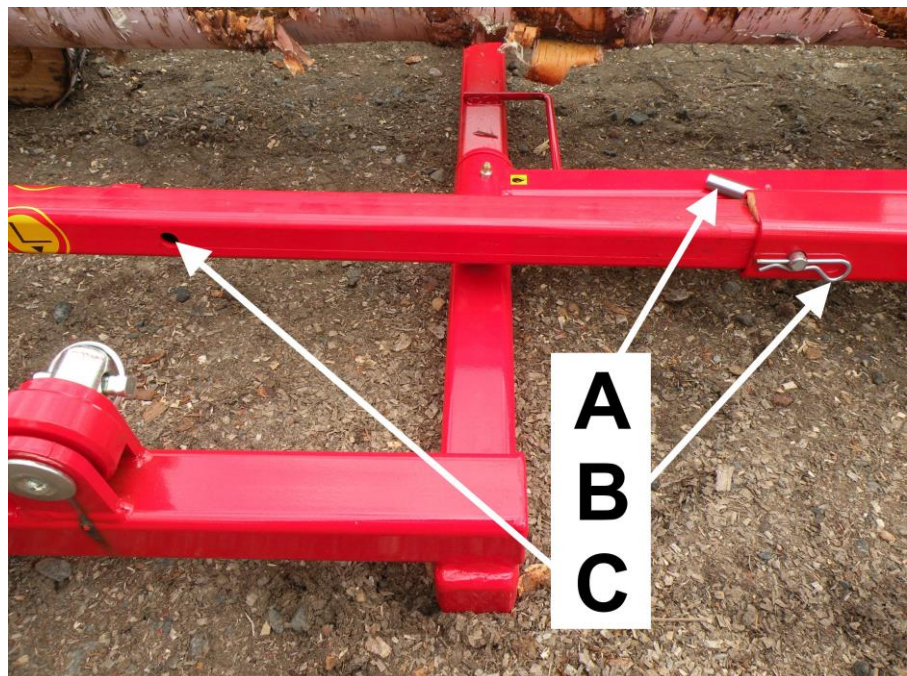


Figure 8.

3. Place the lifter in

the transport position by pushing the control lever in Figure 4.

4. Insert locking pin A shown in Figure 8 into hole C, and lock in place with pin B as shown in Figure 9.

Note! Place the cylinder of the hoist in the shortest position possible!



Figure 9.

5. Remove the hitch pin and locking pin of the holder shown in Figure 5.
6. Raise the lifter to the transport position as shown in Figure 10.



Figure 10.

7. Lock the lifter to the holder with the hitch pin and locking pin as shown in Figure 11.

To place the lifter in the operating position, reverse the order of the steps.

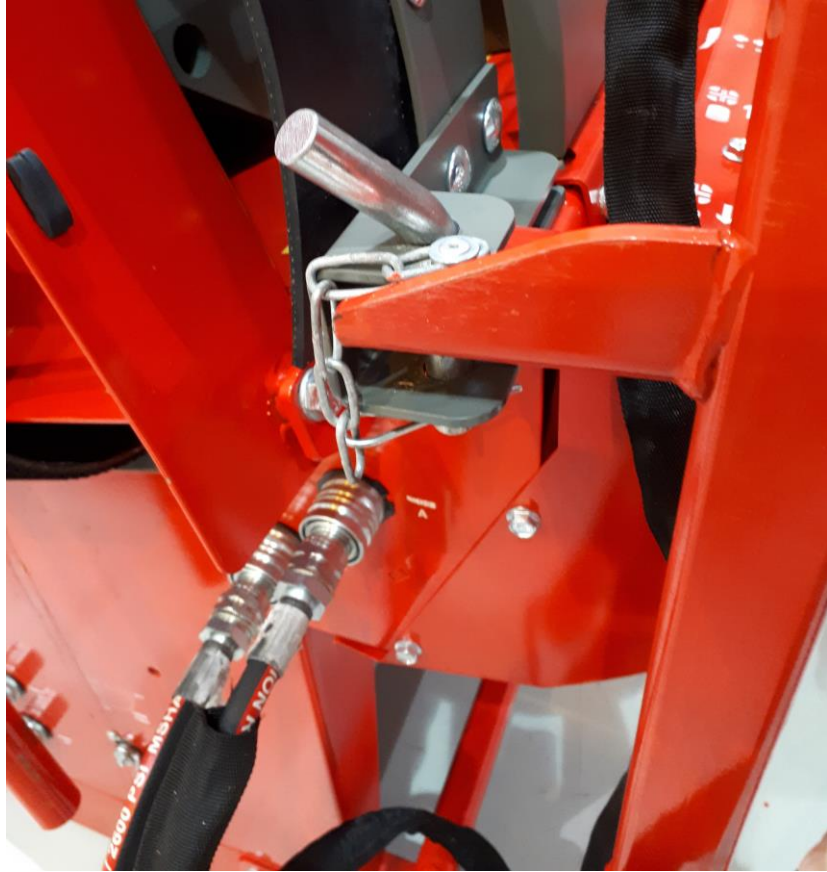


Figure 11.

7 Transporting the firewood processor and lifter for short distances

When moving the firewood processor for short distances (a few meters by a log pile, for example), it is advisable to place the lifter in the “quick transport position.” In this position, the processor and lifter must be moved very slowly and carefully. Place the lifter in the quick transport position as follows:

1. Raise the lifter to the highest possible position and remove hitch pin A and locking pin B in Figure 12.

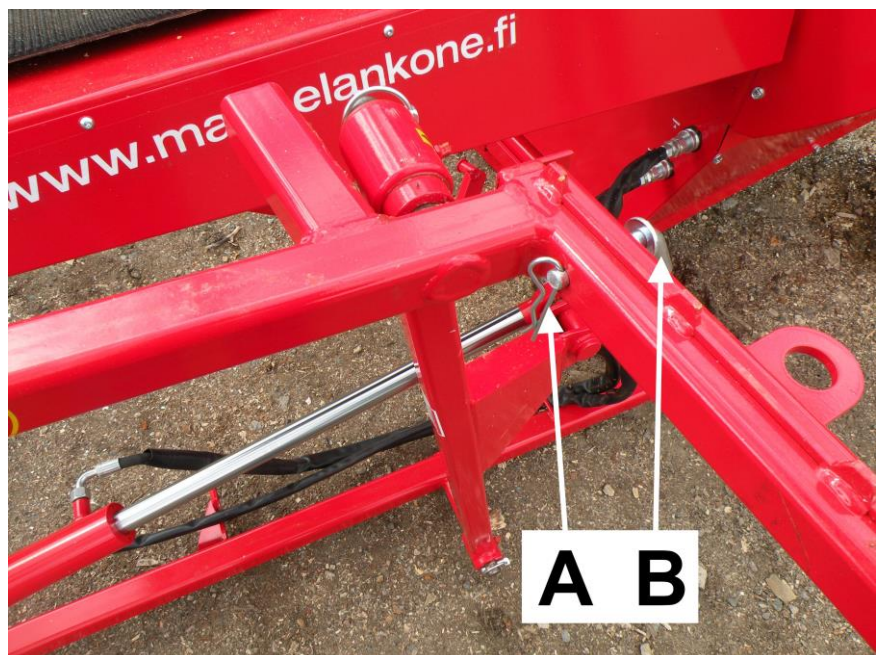


Figure 12.

2. Pull the lifter's support arm C (Figure 13) to the transport position and lock it with the hitch pin and locking pin as shown in Figure 13.



Figure 13.

3. Lift the processor with a tractor, for example, which also lifts the lifter as its support arm connects with the processor's input conveyor.



Figure 14.

8 Lubrication


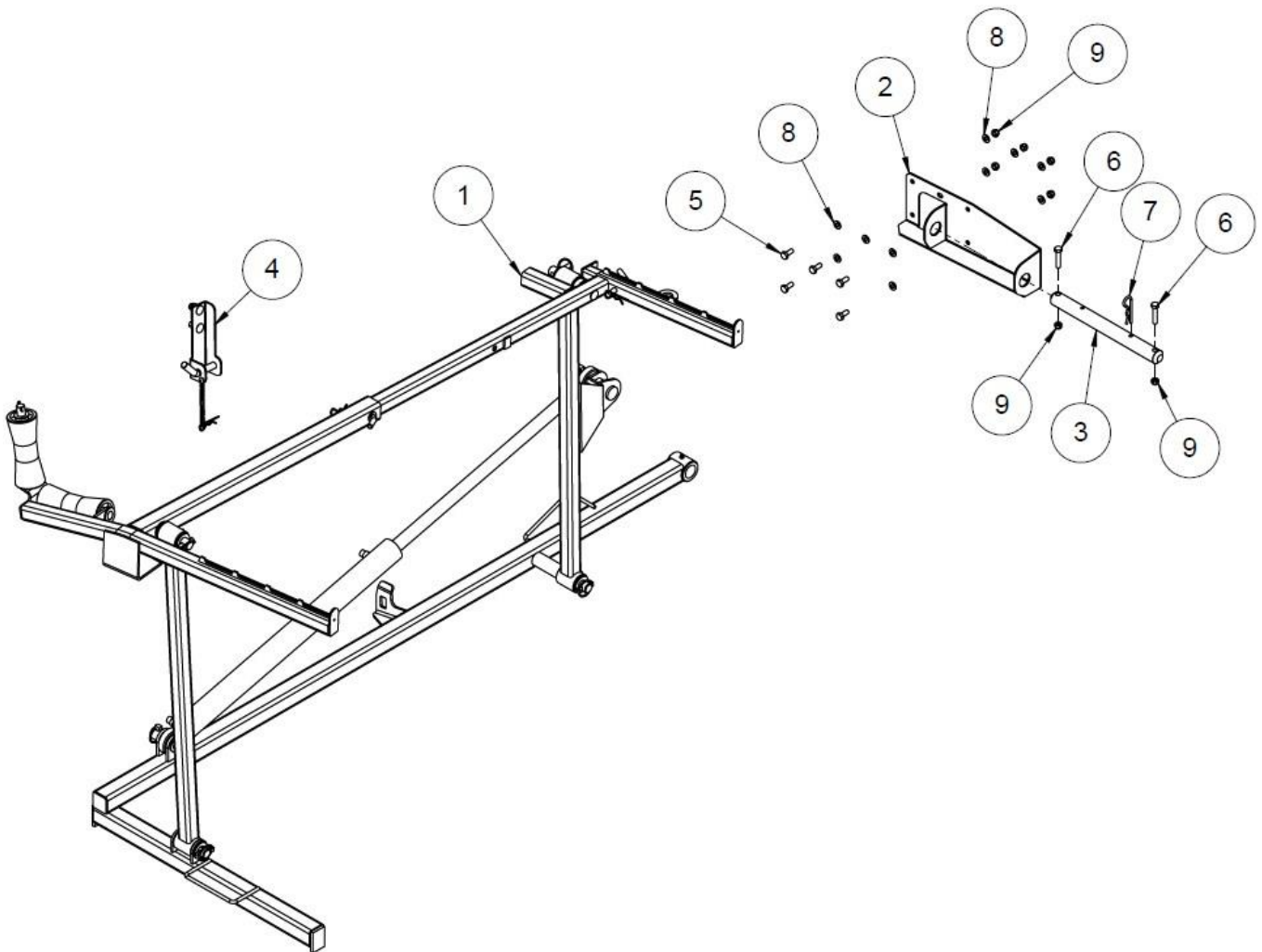
The Hakki Lift Falcon log lifter features a total of five grease nipples, which have been marked on the device with the following label.  All nipples must be greased every ten hours of use. In addition, the lifter's slide surfaces must be greased as necessary, which is approximately after every 50 times of use. The sliding area to be greased is indicated by the arrow in Figure 15.



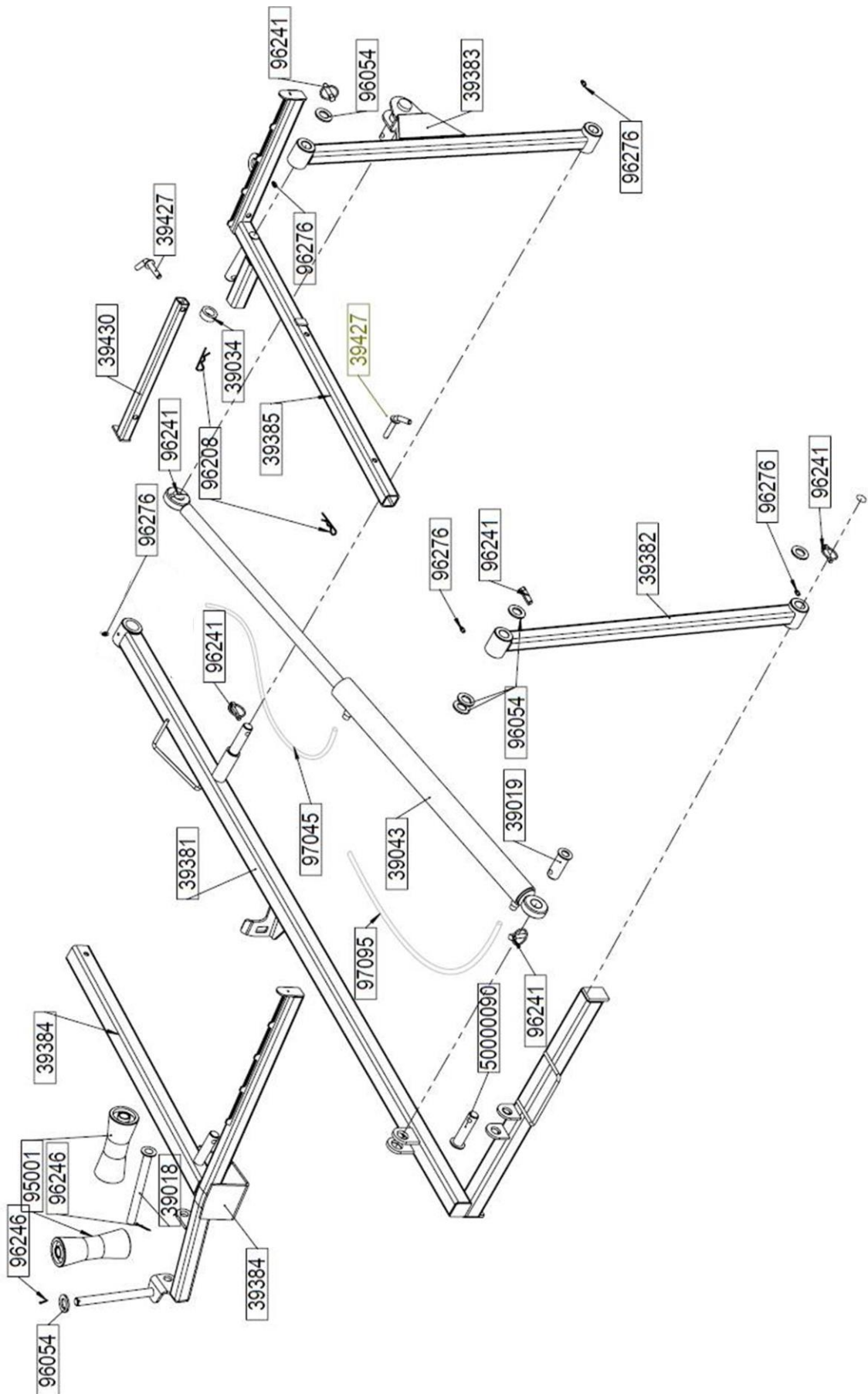
Figure 15.

9 Exploded view 1



No.	Name	Part number	Dimensions	Pcs
9	Lock nut	96068	M10	7
8	Washer	96049	A10	10
7	Pin	96416	5 mm	1
6	Hex screw	96099	M10x50	2
5	Hex screw	96139	M10x25	5
4	Lock assembly	50019633		1
3	Shaft	50007872	Ø35	1
2	Fastening beam	50007871		1
1	Lifter assembly	39375		1

10 Exploded view 2



11 Parts list

Number	Name	Pcs
39381	Frame	1
39382	Lifting pipe, rear	1
39043	Cylinder 60/50-650	1
39383	Lifting pipe	1
39385	Front section of the lifter	1
39384	Rear section of the lifter	1
96241	Ring pin	7
39034	Upper pin bushing	1
39427	Locking pin	2
96208	Hitch pin	2
39430	Moving support	1
39019	Cylinder pin	1
95001	Keel roller	2
39018	Keel roll shaft	1
96276	Lubrication nipple M8X1	5
96246	Split pin DIN 94 3.2x32	2
50000090	Pin	1
96054	Washer DIN 125 A4	6
97045	Hydraulic hose	1
97095	Hydraulic hose	1
39405	Fastening pin	1

12 Guarantee terms

“Guarantee terms come into force when you register your customership on the extranet service found on our website.”

The guarantee is valid for the original buyer for 12 months, starting from the date of purchase, but for no more than 1,000 operating hours.

In guarantee matters, always contact the machine’s seller before undertaking any procedures.

A guarantee claim must be issued to the seller in writing **immediately** upon discovery of a defect. If the defect concerns a damaged part or component, please send a photograph of the damaged part or component to the seller, if possible, so the fault can be identified. When submitting a guarantee claim, the buyer must always include the type and serial number of the machine in the claim and present a receipt that includes the date of purchase. Guarantee claims must be submitted to an authorised retailer.

The guarantee covers

- Parts damaged in normal use due to faults in the material or workmanship.
- Reasonable repair expenses in accordance with the agreement between the seller or buyer and the manufacturer. Faulty parts will be replaced with new ones. A faulty part or parts replaced due to a material fault must be returned to the manufacturer via the retailer.

The guarantee does not cover

- Damage caused by normal wear and tear (such as blades and belts), improper use or use contrary to the instruction manual.
- Damage caused by negligence of maintenance or storage procedures detailed in the instruction manual.
- Damage caused during transport.
- Cutting blades, V-belts and oil as well as normal adjustment, care, maintenance or cleaning procedures.
- Defects in a machine to which the buyer has carried out or commissioned structural or functional changes, to the degree that the machine can no longer be considered equivalent to the original machine.
- Other potential costs or financial obligations resulting from the procedures mentioned
- above.
- Indirect costs.
- Travel costs resulting from guarantee repairs.
- The guarantee for parts replaced during the guarantee period of the machine expires at the same time as the machine’s guarantee.
- The guarantee is void if the ownership of the machine is transferred to a third party during the guarantee period.
- The guarantee is void if any of the machine’s seals have been broken.

If a fault or defect reported by the customer is found not to be covered by the guarantee, the manufacturer has the right to charge the customer for the troubleshooting and possible repair of the fault or defect in accordance with the manufacturer's current price list.

This guarantee certificate indicates our responsibilities and obligations in full and excludes all other responsibilities.

13 EC Declaration of Conformity for the machine

(Machinery Directive 2006/42/EC, Appendix II A)

Manufacturer: Maaselän Kone Oy
Address: Valimotie 1, FI-85800 Haapajärvi, Finland

Name and address of the person who is authorised to compile the technical file:

Name: Timo Jussila Address: Valimotie 1, FI-85800 Haapajärvi, Finland

The aforementioned person assures that

Hakki Lift Falcon log lifter Serial number:

- is compliant with the applicable regulations of the Machinery Directive (2006/42/EC).

Location and date: Haapajärvi 5 November 2017

Signature: 
Anssi Westerlund
Managing Director